

# All Weather Speaker

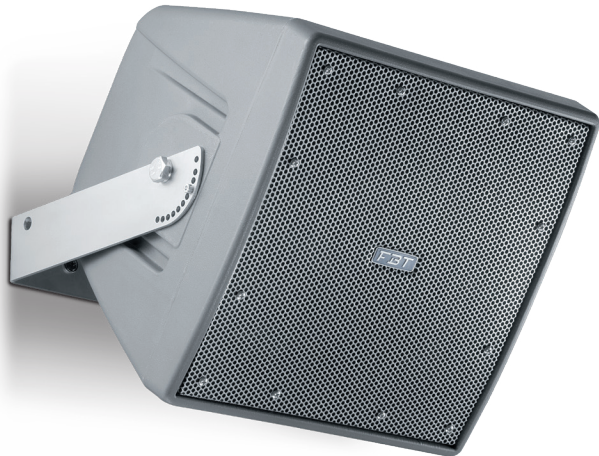


## MAIN APPLICATIONS

- Theme and Amusement parks
  - Outdoor Entertainment centers
  - Multipurpose indoor / outdoor venues
  - Background music
- Athletic fields
  - Swimming pools
  - Convention centers
  - Cruise ship
  - Stadiums / Arenas

## MAIN FEATURES

- Multipurpose high performance 12" coax, 600W - 80hm / 128dB SPL
- 12" coaxial woofer with 2.5" coil and 1" HF driver with 1.7" coil on conical 90° horn
- 100V line transformer with selectable 200W-100W power tapping
- Sturdy molded polyethylene curved enclosure
- Steel U bracket and other included hardware accessories
- 4 wires cable to select the desired power tapping
- Water-stop grille with 3 layers of protection
- IP55 weather resistant
- Standard grey finish RAL 7011



## DESCRIPTION

The FBT SHADOW 112CT is a weatherproof two way loudspeaker system designed to provide high quality voice and music reproduction in applications requiring extreme weather resistance. It is designed to withstand long-term exposure to tough, environmental conditions. The low frequency transducer is a 12" woofer with a 2.5" voice coil. The FBT SHADOW 112CT features a line transformer for 100V applications with selectable 200W-100W power tapping. The cabinet is a single piece rotational moulded in polyethylene, fully UV protected. The cabinet is equipped with a die cast aluminium wall bracket with ball-socket for multi angle adjustment capability. The FBT SHADOW 112CT meets the requirements of IP55 code (International Protection Rating).

## TECHNICAL SPECIFICATIONS

GENERAL		
Code	RAL 7011	36194
Configuration	way	2 coaxial
Low frequency woofer	inch	12 - 2.5 coil
High frequency driver	inch	1 - 1.7 coil
Transformer	V / W	100 / 200 -100

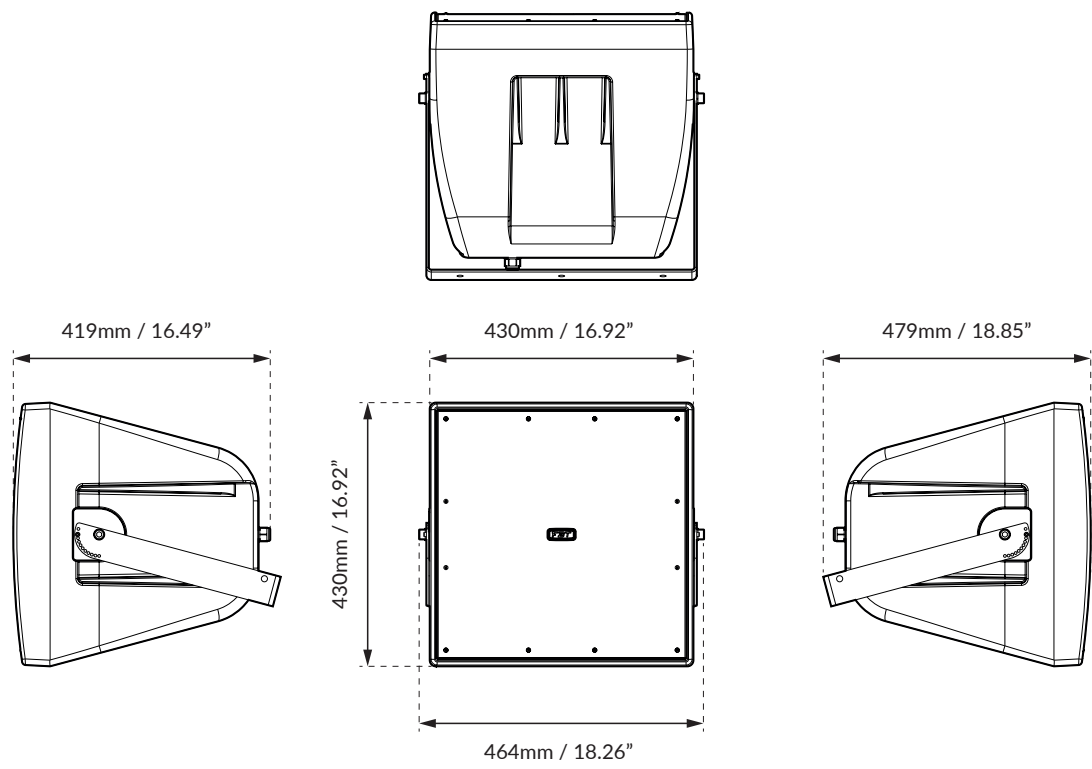
ACOUSTIC SPECIFICATIONS		
Frequency response (@-6dB)	Hz	70 - 20k
Sensitivity (@1W/1m)	dB	98
MAX SPL (cont/peak)	dB	124 / 128
Dispersion	H° x V°	90 conical
Crossover frequency	kHz	1.6
Recommended HP filter	Hz - dB oct	50 - 24

INPUTS & OUTPUTS		
Input connectors		4 wire cable

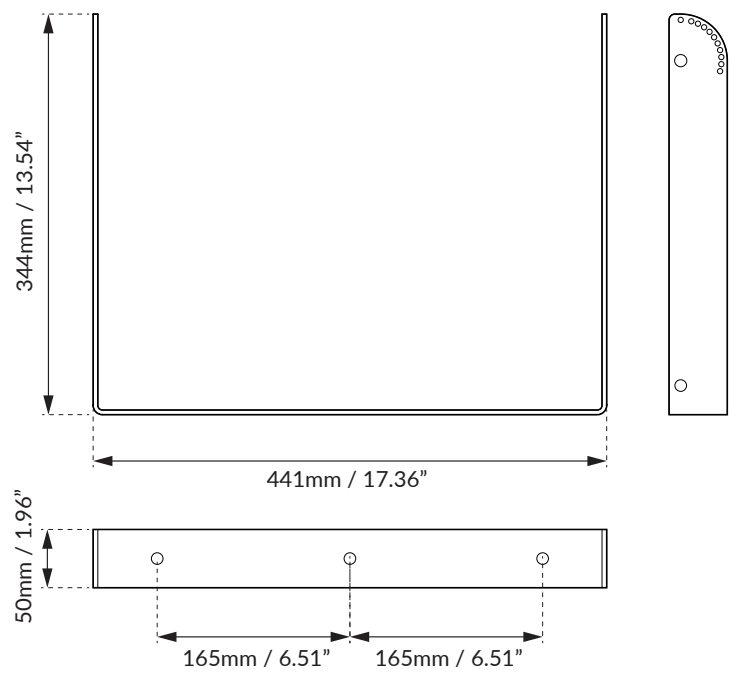
AMPLIFIER		
Recommended amplifier	W RMS	600
Long term power	W	300
Short term power (IEC 268-5)	W	1200
Nominal impedance	Ohm	8

MECHANICAL SPECIFICATIONS		
Material		Polyethylene
Net dimensions (WxHxD)	mm	464 x 430 x 479
	inch	18.26 x 16.92 x 18.85
Transport dimensions (WxHxD)	mm	585 x 590 x 510
	inch	23.03 x 23.22 x 20.07
Net weight	kg	18.20
	lb	40.12
Transport weight	kg	23
	lb	50.70

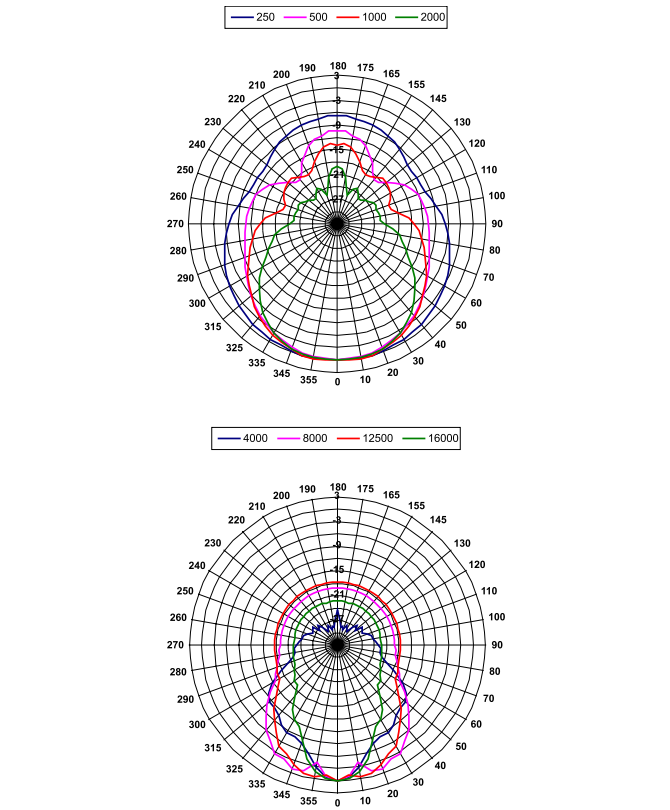
DIMENSIONAL DRAWING



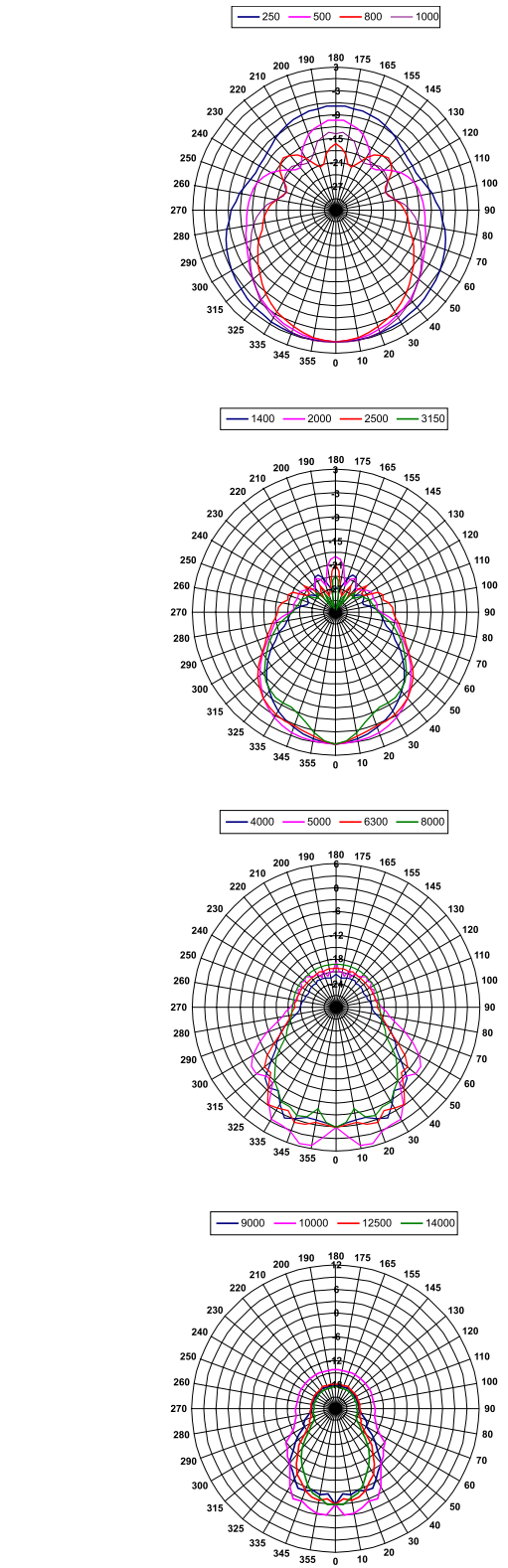
INCLUDED ACCESSORIES



HORIZONTAL POLAR DIAGRAM



VERTICAL POLAR DIAGRAM



FREQUENCY RESPONSE DIAGRAM

