

All Weather Speaker



MAIN APPLICATIONS

- Theme and Amusement parks
- Outdoor Entertainment centers
- Multipurpose indoor / outdoor venues
- Background music
- Athletic fields
- Swimming pools
- Convention centers
- Cruise ship
- Stadiums / Arenas

MAIN FEATURES

- Multipurpose 8" coaxial, 450W-8Ohm / 124dB SPL
- 8" coaxial woofer with 2" coil
- 1" HF driver with 1.4" coil on conical 90° horn
- 100V line transformer with selectable 100W-50W power tapping
- Sturdy molded polyethylene curved enclosure
- Steel U bracket and other included hardware accessories
- 4 wires cable to select the desired power tapping
- Water-stop grille with 3 layers of protection
- IP55 weather resistant
- Standard grey finish RAL 7011



DESCRIPTION

The FBT SHADOW 108CT is a weatherproof two way loudspeaker system designed to provide high quality voice and music reproduction in applications requiring extreme weather resistance. It is designed to withstand long-term exposure to tough, environmental conditions. The low frequency transducer is a 8" woofer with a 2" voice coil. The FBT SHADOW 108CT features a line transformer for 100V applications with selectable 100W-50W power tapping. The cabinet is a single piece rotational moulded in polyethylene, fully UV protected. The cabinet is equipped with a die cast aluminium wall bracket with ball-socket for multi angle adjustment capability. The FBT SHADOW 108CT meets the requirements of IP55 code (International Protection Rating).

TECHNICAL SPECIFICATIONS

GENERAL		
Code	RAL 7011	36193
Configuration	way	2 coaxial
Low frequency woofer	inch	8 - 2 coil
High frequency driver	inch	1 - 1.4 coil
Transformer	V / W	100 / 100 - 50

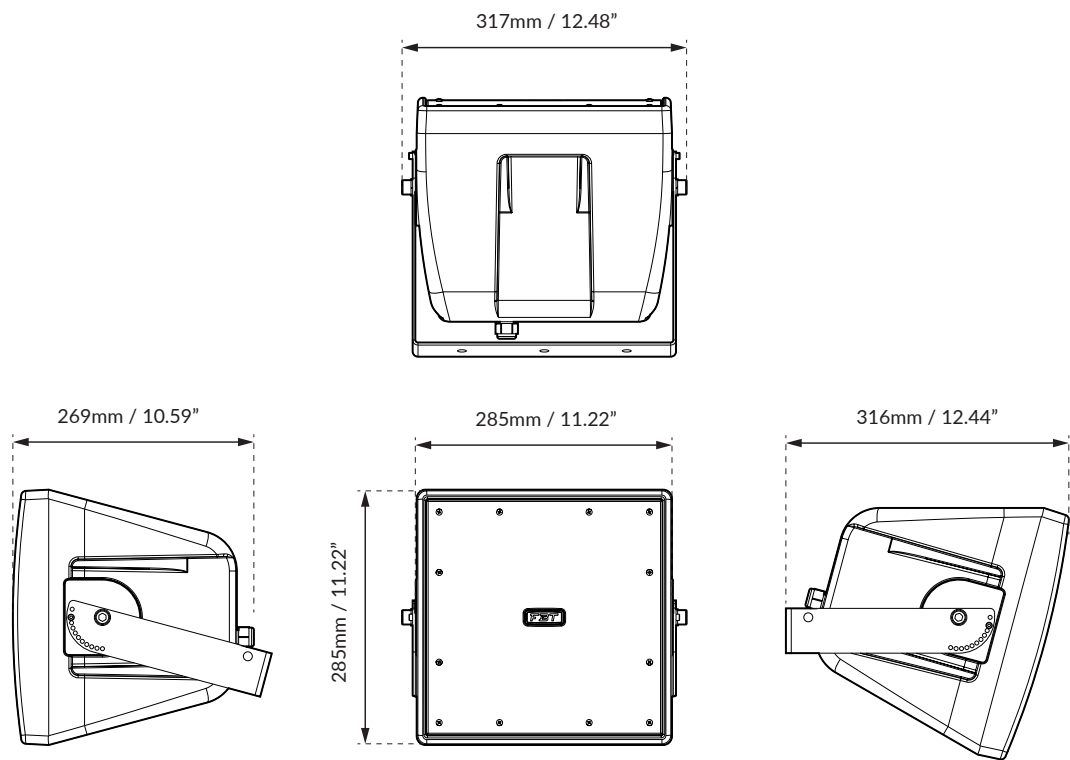
ACOUSTIC SPECIFICATIONS		
Frequency response (@-6dB)	Hz	80 - 20k
Sensitivity (@1W/1m)	dB	95
MAX SPL (cont/peak)	dB	120 / 124
Dispersion	H° x V°	90 conical
Crossover frequency	kHz	1.8
Recommended HP filter	Hz - dB oct	60 - 24

INPUTS & OUTPUTS		
Input connectors		4 wire cable

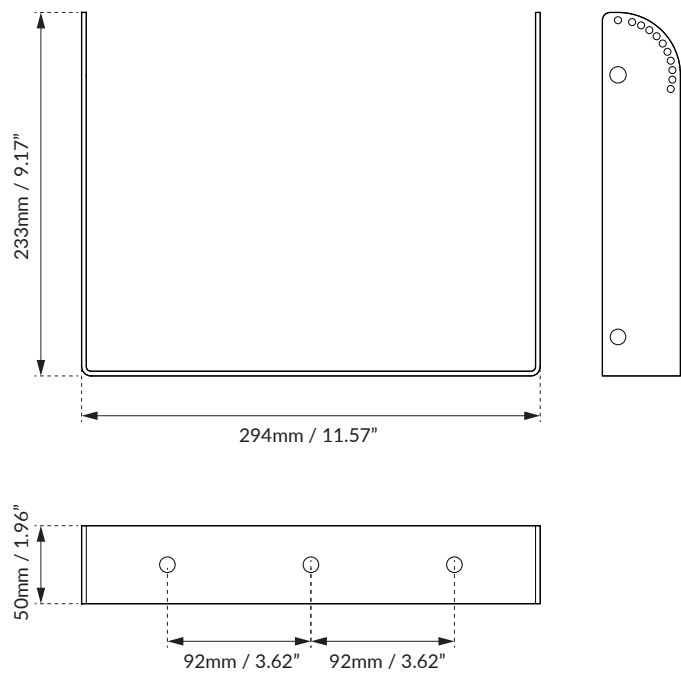
AMPLIFIER		
Recommended amplifier	W RMS	450
Long term power	W	225
Short term power (IEC 268-5)	W	900
Nominal impedance	Ohm	8

MECHANICAL SPECIFICATIONS		
Material		Polyethylene
Net dimensions (WxHxD)	mm	317 x 285 x 316
	inch	12.48 x 11.22 x 12.44
Transport dimensions (WxHxD)	mm	395 x 390 x 340
	inch	15.55 x 15.35 x 13.38
Net weight	kg	10.50
	lb	23.14
Transport weight	kg	12.20
	lb	26.89

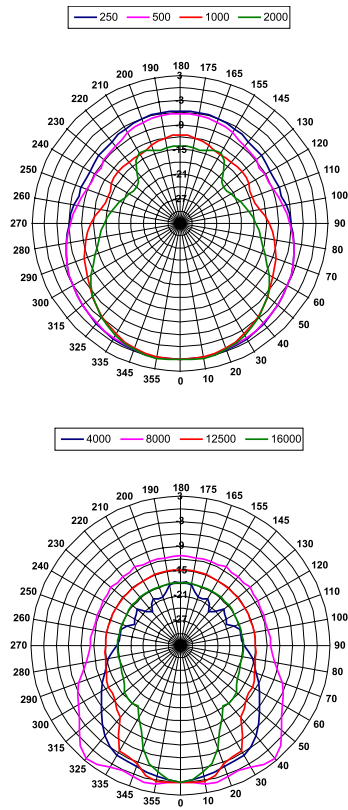
DIMENSIONAL DRAWING



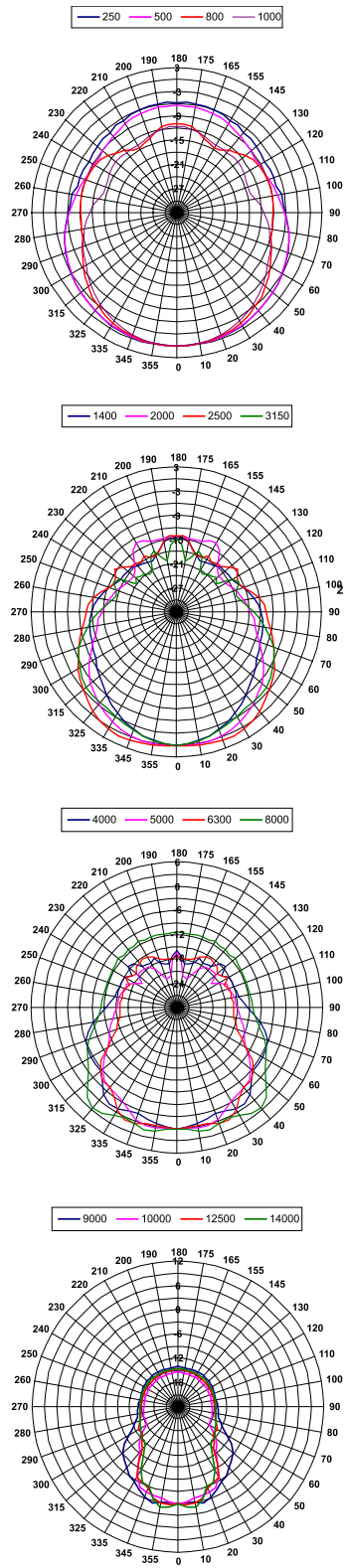
INCLUDED ACCESSORIES



HORIZONTAL POLAR DIAGRAM



VERTICAL POLAR DIAGRAM



FREQUENCY RESPONSE DIAGRAM

