

Passive Reinforcement Speaker

MAIN APPLICATIONS

- Live sound PAsystem
- Live sound monitor
- DJ system
- School and corporate audio visual sound reinforcement
- Background music/announcements: restaurants, pubs
- Transportation terminals, Clubs, Auditoriums, Theatres, Gyms, Houses of worship

MAIN FEATURES

- 2-way passive sound reinforcement speaker
- 300W RMS recommended amplifier
- Polypropylene cabinet
- Built-in passive crossover
- Control panel features 2 x Speakon NL-4 IN&LINK
- 12°, 40°, 55° monitoring angles
- Completely manufactured in Italy



DESCRIPTION

The FBT ProMaxX 110 has been designed to meet the highest standards in both performance. With a specially developed polypropylene cabinet and stylish full grille aesthetic, the FBT ProMaxX 110 represents the next step in the evolution of a portable sound classic. The FBT ProMaxX 110 incorporates a 10" LF woofer with a 2" voice coil, custom-made for FBT and 1" exit throat B&C HF compression driver with 1.4" voice coil; with a constant directivity horn (90° H x 60° V) ensure accurate coverage and with a frequency range from 60Hz to 18kHz the FBT ProMaxX 110 speaker provide high fidelity sound for both speech and music applications with a maximum SPL of 127dB. Ideal for small fixed installations, the FBT ProMaxX 110 speaker system has an impedance of 8 Ohm and the internal crossover is at a fixed frequency of 1.8kHz. Rear panel connections feature 2 x NL4 Neutrik Speakon. The two M10 suspension points along with the optional mounting bracket allow the FBT ProMaxX 110 speaker to be surface mounted on a wall or ceiling and a standard 1.38" speaker stand socket allows the FBT ProMaxX 110 to be mounted on a speaker stand.

TECHNICAL SPECIFICATIONS

GENERAL

Code		40685
Configuration	way	2
Low frequency woofer	inch	10 - 2 coil
High frequency driver	inch	1 - 1.4 coil

ACOUSTIC SPECIFICATIONS

Frequency response (@-6dB)	Hz	60 - 18k
Sensitivity (@1W/1m)	dB	97
MAX SPL (cont/peak)	dB	122 / 127
Dispersion	H° x V°	90 x 60
Recommended HP filter	Hz - dB oct	50 - 12 / 24
Crossover frequency	Hz	1.8k

INPUTS & OUTPUTS

Input connectors		2 x Neutrik speakon NL4
------------------	--	-------------------------

AMPLIFIER

Recommended amplifier	W RMS	300
Long term power*	W	150
Short term power (IEC 268-5)**	W	600
Nominal impedance	Ohm	8

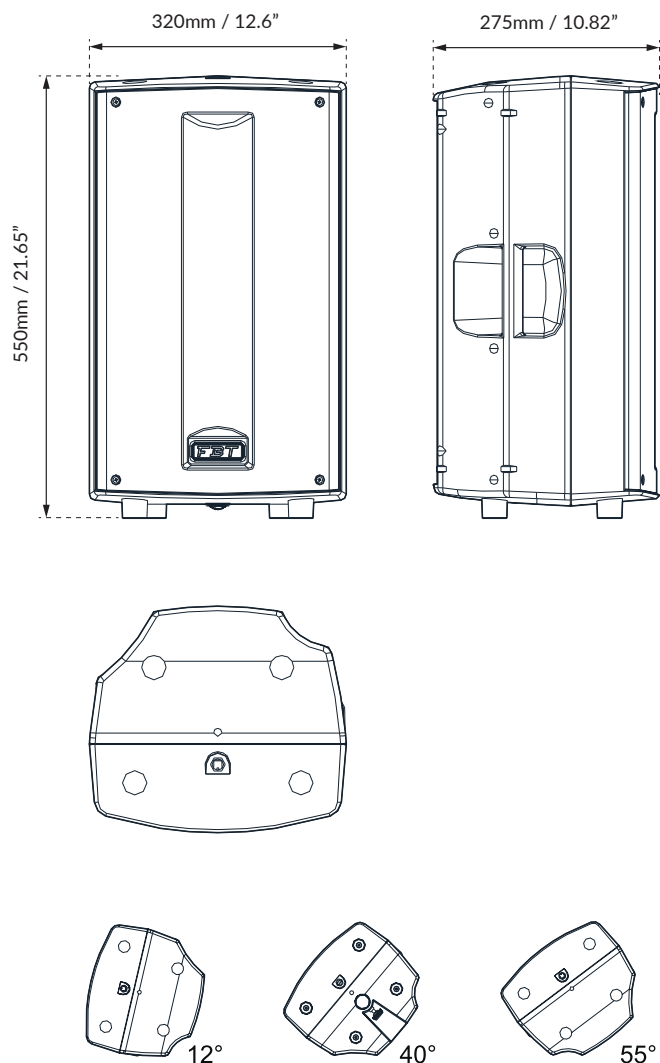
MECHANICAL SPECIFICATIONS

Material		Polypropylene
Net dimensions (WxHxD)	mm	320 x 550 x 275
	inch	12.6 x 21.65 x 10.82
Transport dimensions (WxHxD)	mm	395 x 640 x 350
	inch	15.55 x 25.20 x 13.78
Net weight	kg	11.90
	lb	26.23
Transport weight	kg	13.30
	lb	29.32

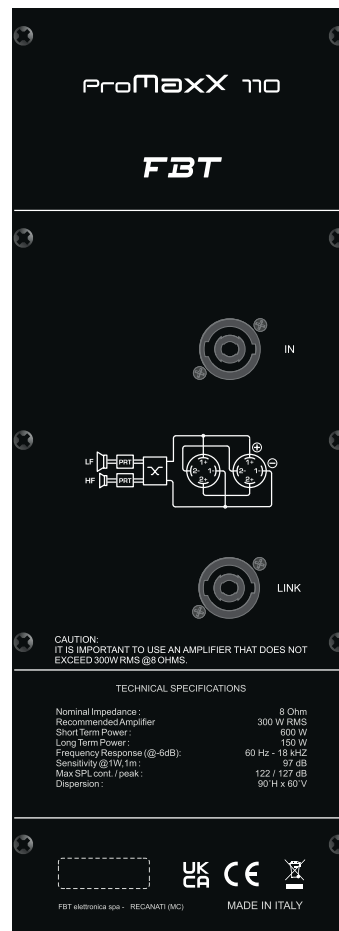
* 100 hour power test, IEC 268-5 standard (display the long term RMS voltage handling, using IEC filtered 6dB crest factor pink noise).

**Based on peak level of 6dB crest factor random noise signal used for test.

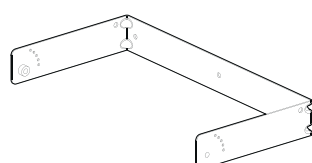
DIMENSIONAL DRAWING



CONTROL PANEL



ACCESSORIES



BOX-127

Horizontal Wall Bracket

Code: 33328

556 x 70 x 268mm

21.88 x 2.75 x 10.55inch

2 kg / 4.40 lb