

# Passive Reinforcement Speaker

## MAIN APPLICATIONS

- Live sound PAsystem
- Live sound monitor
- DJ system
- School and corporate audio visual sound reinforcement
- Background music/announcements: restaurants, pubs
- Transportation terminals, Clubs, Auditoriums, Theatres, Gyms, Houses of worship

## MAIN FEATURES

- 2-way passive sound reinforcement speaker
- 400W RMS recommended amplifier
- Polypropylene cabinet
- Built-in passive crossover
- Control panel features 2 x Speakon NL-4 IN&LINK
- 12°, 40°, 55° monitoring angles
- Completely manufactured in Italy



## DESCRIPTION

The FBT ProMaxX 112 has been designed to meet the highest standards in both performance. With a specially developed polypropylene cabinet and stylish full grille aesthetic, the FBT ProMaxX 112 represents the next step in the evolution of a portable sound classic. The FBT ProMaxX 112 incorporates a 12" LF woofer with a 2.5" voice coil, custom-made for FBT and a 1" exit throat B&C HF compression driver with 1.4" voice coil; with a constant directivity horn (90° H x 60° V) ensure accurate coverage and with a frequency range from 55Hz to 18kHz the FBT ProMaxX 112 speaker provide high fidelity sound for both speech and music applications with a maximum SPL of 129dB. Ideal for small fixed installations the FBT ProMaxX 112 speaker system has an impedance of 8 Ohm and the internal crossover is at a fixed frequency of 1.6kHz. Rear panel connections feature 2 x NL4 Neutrik Speakon. The two M10 suspension points along with the optional mounting bracket allow the FBT ProMaxX 112 speaker to be surface mounted on a wall or ceiling and a standard 1.38" speaker stand socket allows the FBT ProMaxX 112 to be mounted on a speaker stand.

## TECHNICAL SPECIFICATIONS

### GENERAL

Code		40684
Configuration	way	2
Low frequency woofer	inch	12 - 2.5 coil
High frequency driver	inch	1 - 1.4 coil

### ACOUSTIC SPECIFICATIONS

Frequency response (@-6dB)	Hz	55 - 18k
Sensitivity (@1W/1m)	dB	98
MAX SPL (cont/peak)	dB	125 / 129
Dispersion	H° x V°	90 x 60
Recommended HP filter	Hz - dB oct	45 - 24
Crossover frequency	Hz	1.6k

### INPUTS & OUTPUTS

Input connectors		2 x Neutrik speakon NL4
------------------	--	-------------------------

### AMPLIFIER

Recommended amplifier	W RMS	400
Long term power*	W	200
Short term power (IEC 268-5)**	W	800
Nominal impedance	Ohm	8

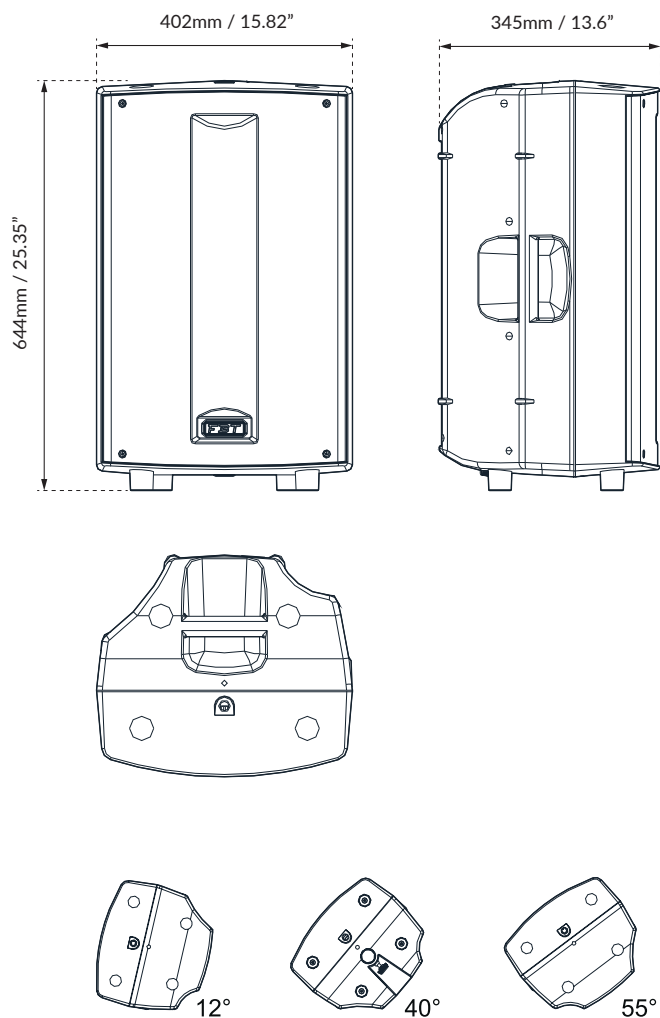
### MECHANICAL SPECIFICATIONS

Material		Polypropylene
Net dimensions (WxHxD)	mm	402 x 644 x 345
	inch	15.82 x 25.35 x 13.6
Transport dimensions (WxHxD)	mm	500 x 750 x 435
	inch	19.68 x 29.52 x 17.12
Net weight	kg	17
	lb	37.47
Transport weight	kg	19
	lb	41.88

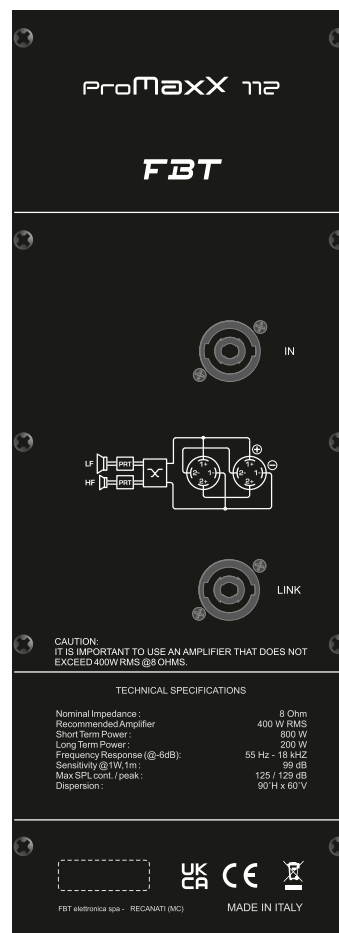
\* 100 hour power test, IEC 268-5 standard (display the long term RMS voltage handling, using IEC filtered 6dB crest factor pink noise).

\*\*Based on peak level of 6dB crest factor random noise signal used for test.

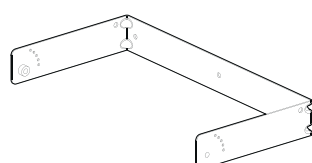
## DIMENSIONAL DRAWING



## CONTROL PANEL



## ACCESSORIES



### BOX-128

#### Horizontal Wall Bracket

Code: 33329

643 x 70 x 310mm

25.31 x 2.75 x 12.2inch

2.20 kg / 4.85 lb