

Passive Reinforcement Speaker

MAIN APPLICATIONS

- Live sound PAsystem
- Live sound monitor
- DJ system
- School and corporate audio visual sound reinforcement
- Background music/announcements: restaurants, pubs
- Transportation terminals, Clubs, Auditoriums, Theatres, Gyms, Houses of worship

MAIN FEATURES

- 2-way passive sound reinforcement speaker
- 700W RMS recommended amplifier
- Polypropylene cabinet
- Built-in passive crossover
- Control panel features 2 x Speakon NL-4 IN&LINK
- 12°, 40°, 55° monitoring angles
- Completely manufactured in Italy

DESCRIPTION

The FBT ProMaxX 114 has been designed to meet the highest standards in both performance. With a specially developed polypropylene cabinet and stylish full grille aesthetic, the FBT ProMaxX 114 represents the next step in the evolution of a portable sound classic. The FBT ProMaxX 114 incorporates a 14" LF neodymium woofer with a 3" voice coil, custom-made for FBT and a 1.4" exit throat B&C HF compression driver with 2.5" voice coil; with a constant directivity horn (90° H x 60° V) ensure accurate coverage and with a frequency range from 50Hz to 18kHz the FBT ProMaxX 114 speaker provide high fidelity sound for both speech and music applications with a maximum SPL of 132dB. Ideal for small and medium fixed installations the FBT ProMaxX 114 speaker system has an impedance of 8 Ohm and the internal crossover is at a fixed frequency of 1.3kHz. Rear panel I connections feature 2 x NL4 Neutrik Speakon. The two M10 suspension points along with the optional mounting bracket allow the FBT ProMaxX 114 speaker to be surface mounted on a wall or ceiling and a standard 1.38" speaker stand socket allows the FBT ProMaxX 114 to be mounted on a speaker stand.

TECHNICAL SPECIFICATIONS

GENERAL

Code		40683
Configuration	way	2
Low frequency woofer	inch	14 - 3 coil
High frequency driver	inch	1.4 - 2.5 coil

ACOUSTIC SPECIFICATIONS

Frequency response (@-6dB)	Hz	50 - 18k
Sensitivity (@1W/1m)	dB	100
MAX SPL (cont/peak)	dB	128 / 132
Dispersion	H° x V°	90 x 60
Recommended HP filter	Hz - dB oct	40 - 24
Crossover frequency	Hz	1.3k

INPUTS & OUTPUTS

Input connectors		2 x Neutrik speakon NL4
------------------	--	-------------------------

AMPLIFIER

Recommended amplifier	W RMS	700
Long term power*	W	350
Short term power (IEC 268-5)**	W	1400
Nominal impedance	Ohm	8

MECHANICAL SPECIFICATIONS

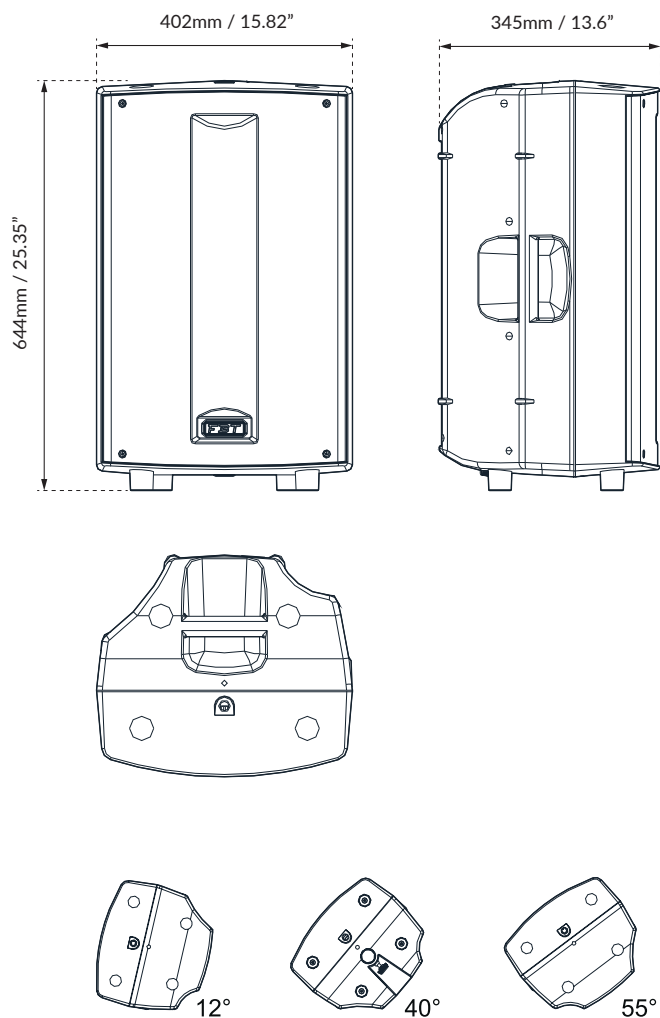
Material		Polypropylene
Net dimensions (WxHxD)	mm	402 x 644 x 345
	inch	15.82 x 25.35 x 13.6
Transport dimensions (WxHxD)	mm	500 x 750 x 435
	inch	19.68 x 29.52 x 17.12
Net weight	kg	17.90
	lb	39.46
Transport weight	kg	20.20
	lb	44.53

* 100 hour power test, IEC 268-5 standard (display the long term RMS voltage handling, using IEC filtered 6dB crest factor pink noise).

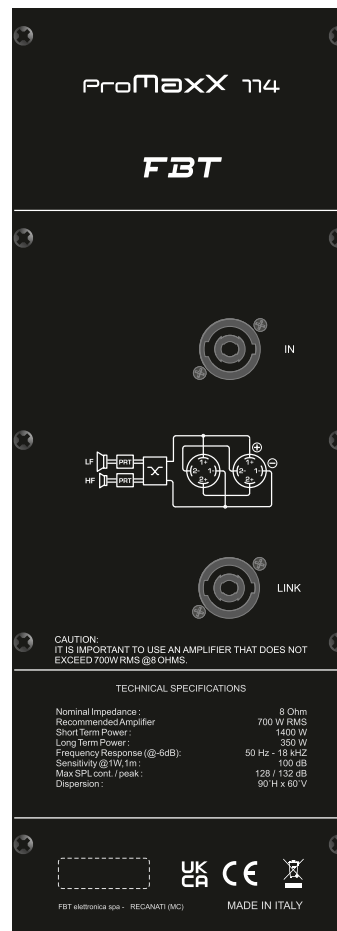
**Based on peak level of 6dB crest factor random noise signal used for test.



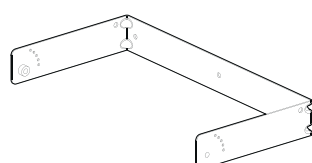
DIMENSIONAL DRAWING



CONTROL PANEL



ACCESSORIES



BOX-128

Horizontal Wall Bracket
Code: 33329

643 x 70 x 310mm
25.31 x 2.75 x 12.2inch
2.20 kg / 4.85 lb