

# Passive Reinforcement Speaker

## MAIN APPLICATIONS

- Bars, pubs & clubs
- Restaurants
- Retail shops
- Entertainment venues
- Fitness centres
- Exhibition centres
- Conference rooms
- Theatres
- Houses of worship

## MAIN FEATURES

- 2-way passive sound reinforcement system
- 0.47" baltic birch plywood cabinet
- 1 x 6.5" custom made LF woofer with rubber surround
- 1 x 1" HF dome tweeter
- 150W continuous pink noise
- 300W continuous program / 600W peak
- Optional line transformer (100V / 100W)
- Multiple M5 threaded rigging points
- Crossover networks equipped with 4 x Euroblock speaker terminals
- Choice of different RAL paint colours and different paint finish
- Completely manufactured in Italy

## DESCRIPTION

The loudspeaker shall consist of a 6.5" low-frequency transducer and a 1" HF dome tweeter; the low-frequency driver's voice coil shall be 1.5" in diameter. Performance specifications of a typical unit shall be as follows: usable frequency response shall extend from 60Hz to 22kHz; nominal impedance shall be 8 ohms; the frequency dividing network shall have a crossover frequency of 2.5 kHz; measured sensitivity shall be at least 91dB (at 1m [3.3ft]). The input shall be switchable for use either at nominal 8 ohms or on a 100V distributed speaker line via transformer (optional). The cabinet shall be constructed of 0.47" baltic birch plywood covered in a scratch- and scuff-resistant black or white finish. ARCHON speakers shall be installed in suspension by wall bracket, on a tripod stand, with adjustable wall support, and simple stack installation.

## TECHNICAL SPECIFICATIONS

### GENERAL

Code	Black	36251
	White	44554
Configuration	way	2
Low frequency woofer	inch	6.5 - 1.5 coil
High frequency driver	inch	1 - 1 coil

### ACOUSTIC SPECIFICATIONS

Frequency response (@-6dB)	Hz	60 - 22k
MAX SPL (cont/peak) (bi-amp)*	dB	116 / 119
Dispersion	H° x V°	100
Sensitivity (@1W/1mt)	dB	91
Crossover frequency	Hz	2.5k
Recommended HP filter	Hz - dB oct	45 - 24

### INPUTS & OUTPUTS

Connectors	4-pin Euroblock
------------	-----------------

\* CONT. SPL: free space, based on recommended amp rating and LF transducer average sensitivity data, 125mS time average  
 PEAK SPL: free space, based on short term applicable power rating and system peak sensitivity, 10mS time average

### AMPLIFIER

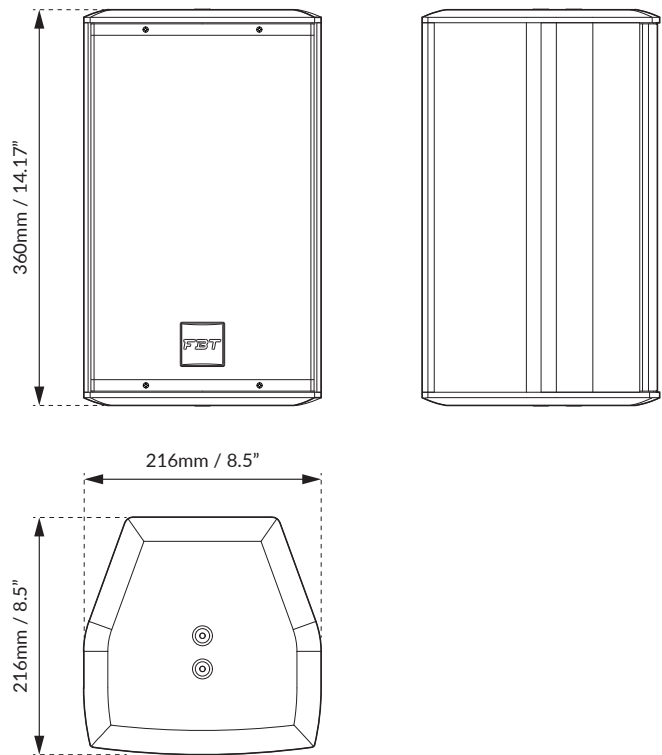
Recommended amplifier	W RMS	300
Transformer (optional)	V / W	100 / 100
Long term power	W	150
Short term power (IEC 268-5)	W	600
Nominal impedance	Ohm	8

### MECHANICAL SPECIFICATIONS

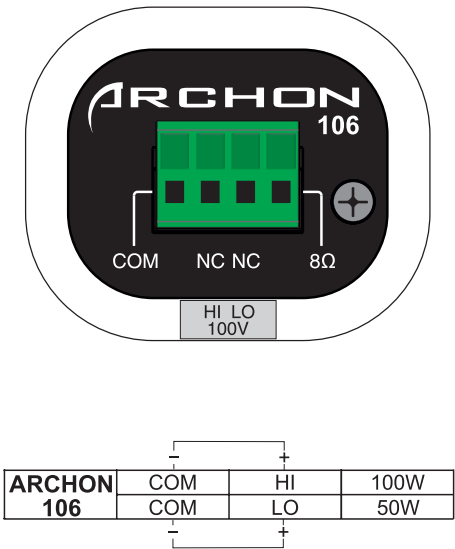
Material	Cabinet	0.47" baltic birch plywood
	Grille	Steel
Net dimensions (WxHxD)	mm	216 x 360 x 216
	inch	8.50 x 14.17 x 8.50
Transport dimensions (WxHxD)	mm	335 x 450 x 325
	inch	13.19 x 17.72 x 12.80
Net weight	kg	5.80
	lb	12.78
Transport weight	kg	7
	lb	15.43



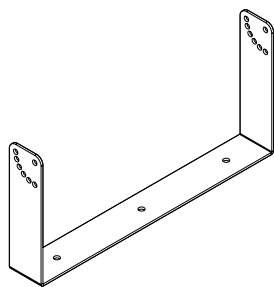
DIMENSIONAL DRAWING



CONTROL PANEL



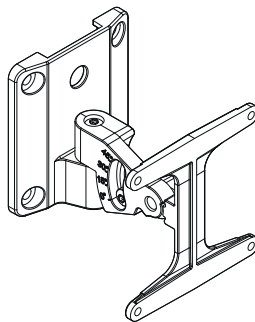
ACCESSORIES



AC-U 106H

**Horizontal Metal Bracket**  
Black code: 40337  
White code: 44557

367 x 50 x 175mm  
14.44 x 1.96 x 6.88inch  
1 kg / 2.20 lb



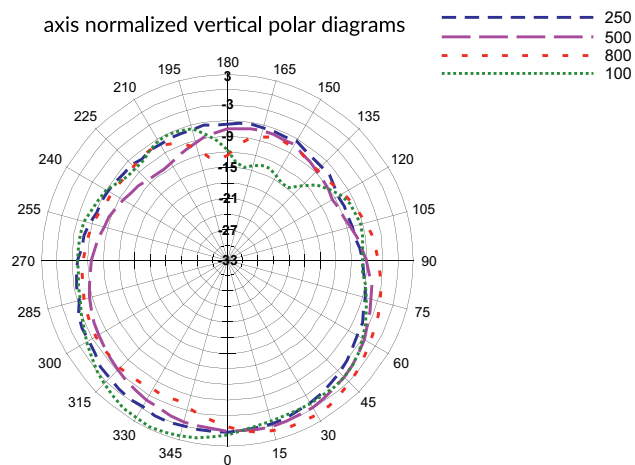
WM-68

**Wall Metal Bracket**  
Black code: 44856  
White code: 44865

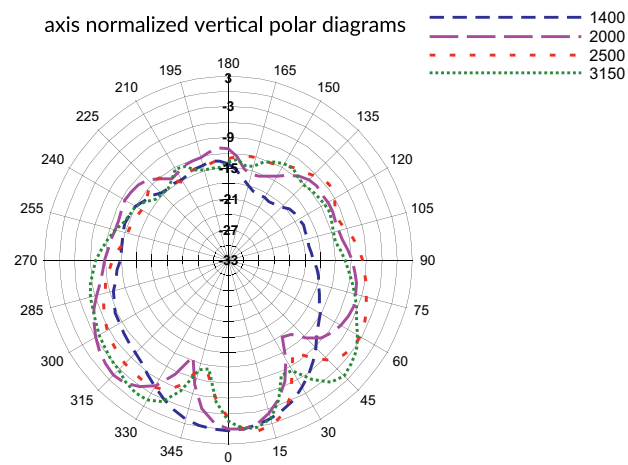
90.5 x 90 x 91.5mm  
3.56 x 3.54 x 3.60inch  
0.25 kg / 0.55 lb

## DIAGRAMS

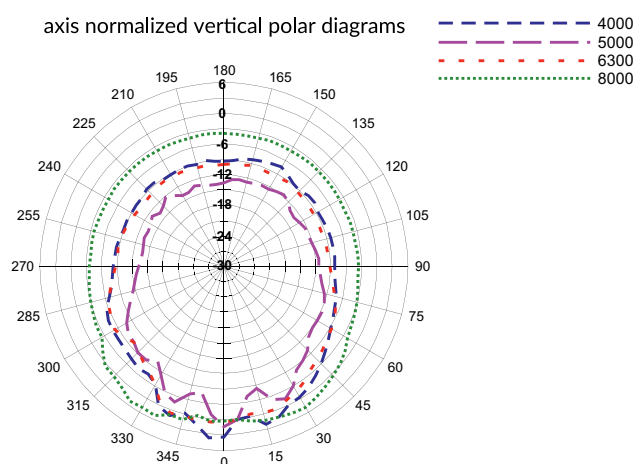
axis normalized vertical polar diagrams



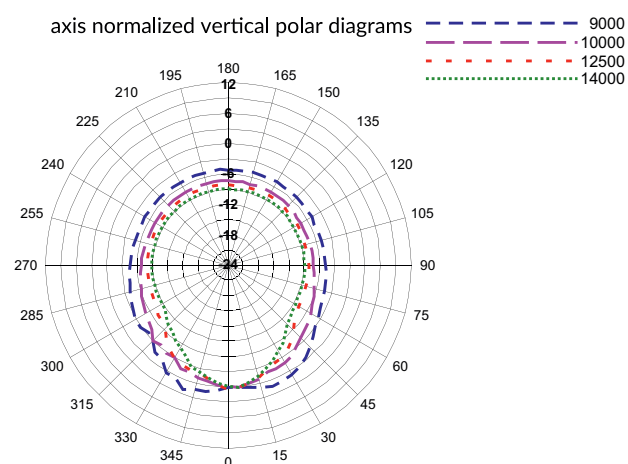
axis normalized vertical polar diagrams



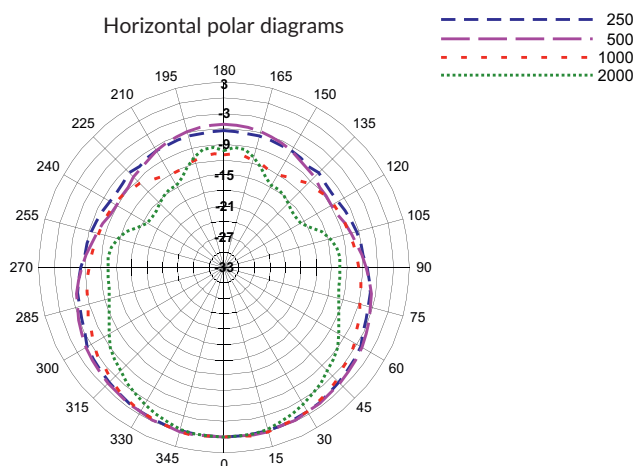
axis normalized vertical polar diagrams



axis normalized vertical polar diagrams



Horizontal polar diagrams



Horizontal polar diagrams

