

Passive Reinforcement Speaker

MAIN APPLICATIONS

- Bars, pubs & clubs
- Restaurants
- Retail shops
- Entertainment venues
- Fitness centres
- Exhibition centres
- Conference rooms
- Theatres
- Houses of worship

MAIN FEATURES

- 2-way passive sound reinforcement system
- 0.47" baltic birch plywood cabinet
- 1 x 8" custom made LF woofer with rubber surround
- 1 x 1.5" HF dome tweeter
- 175W continuous pink noise
- 350W continuous program / 700W peak
- Optional line transformer (100V / 100W)
- Multiple M5 threaded rigging points
- Crossover networks equipped with 4 x Euroblock speaker terminals
- Choice of different RAL paint colours and different paint finish
- Completely manufactured in Italy

DESCRIPTION

The loudspeaker shall consist of a 6.5" low-frequency transducer and a 1" HF dome tweeter; the low-frequency driver's voice coil shall be 1.5" in diameter. Performance specifications of a typical unit shall be as follows: usable frequency response shall extend from 60Hz to 22kHz; nominal impedance shall be 8 ohms; the frequency dividing network shall have a crossover frequency of 2.5 kHz; measured sensitivity shall be at least 91dB (at 1m [3.3ft]). The input shall be switchable for use either at nominal 8 ohms or on a 100V distributed speaker line via transformer (optional). The cabinet shall be constructed of 0.47" baltic birch plywood covered in a scratch- and scuff-resistant black or white finish. ARCHON speakers shall be installed in suspension by wall bracket, on a tripod stand, with adjustable wall support, and simple stack installation.

TECHNICAL SPECIFICATIONS

GENERAL

Code	Black	36252
	White	44555
Configuration	way	2
Low frequency woofer	inch	8 - 1.5 coil
High frequency driver	inch	1.5 - 1.5 coil

ACOUSTIC SPECIFICATIONS

Frequency response (@-6dB)	Hz	55 - 22k
MAX SPL (cont/peak) (bi-amp)*	dB	118 / 121
Dispersion	H° x V°	90
Sensitivity (@1W/1mt)	dB	92.5
Crossover frequency	Hz	2k
Recommended HP filter	Hz - dB oct	40 - 24

INPUTS & OUTPUTS

Connectors		4-pin Euroblock
------------	--	-----------------

* CONT. SPL: free space, based on recommended amp rating and LF transducer average sensitivity data, 125mS time average
 PEAK SPL: free space, based on short term applicable power rating and system peak sensitivity, 10mS time average

AMPLIFIER

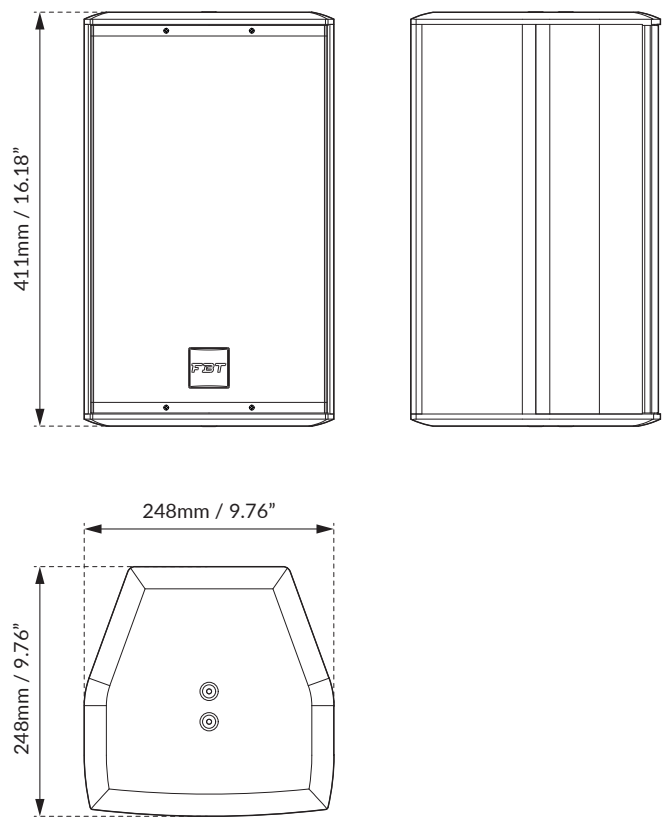
Recommended amplifier	W RMS	350
Transformer (optional)	V / W	100 / 100
Long term power	W	175
Short term power (IEC 268-5)	W	700
Nominal impedance	Ohm	8

MECHANICAL SPECIFICATIONS

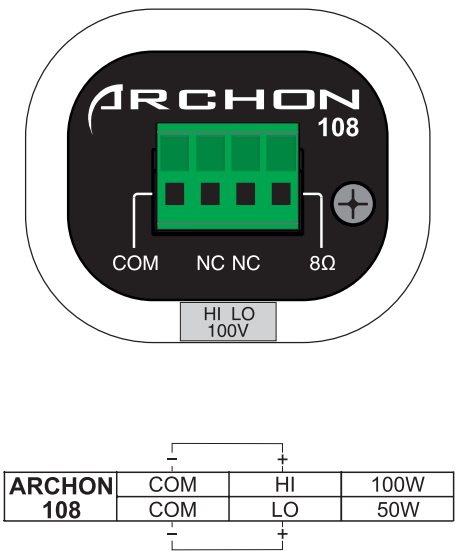
Material	Cabinet	0.47" baltic birch plywood
	Grille	Steel
Net dimensions (WxHxD)	mm	248 x 411 x 248
	inch	9.76 x 16.18 x 9.76
Transport dimensions (WxHxD)	mm	360 x 535 x 315
	inch	14.17 x 21.06 x 12.4
Net weight	kg	8.20
	lb	18.08
Transport weight	kg	9.50
	lb	20.94



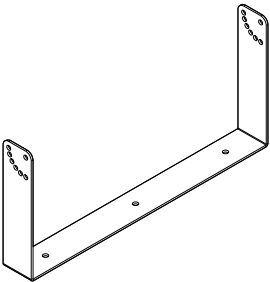
DIMENSIONAL DRAWING



CONTROL PANEL



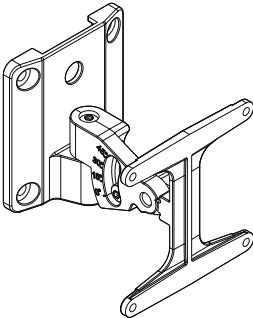
ACCESSORIES



AC-U 108H

Horizontal Metal Bracket
Black code: 40338
White code: 44558

418 x 50 x 195mm
16.45 x 1.96 x 7.67inch
1 kg / 2.20 lb



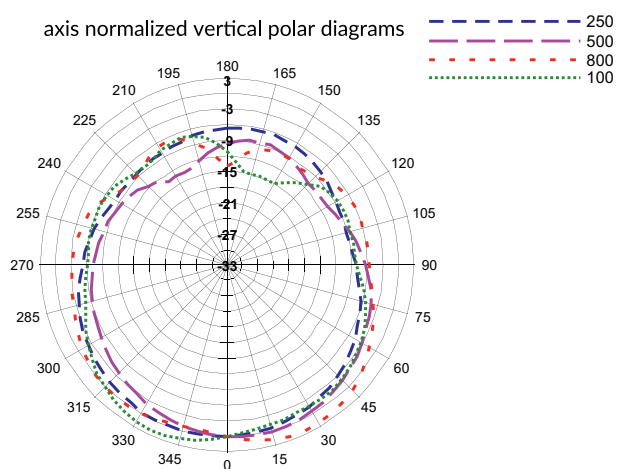
WM-68

Wall Metal Bracket
Black code: 44856
White code: 44865

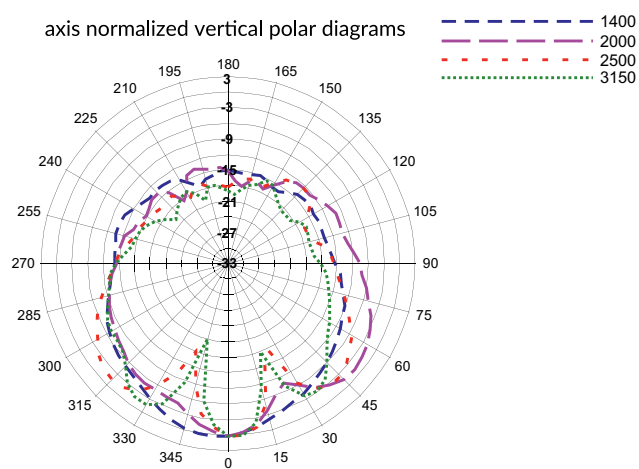
90.5 x 90 x 91.5mm
3.56 x 3.54 x 3.60inch
0.25 kg / 0.55 lb

DIAGRAMS

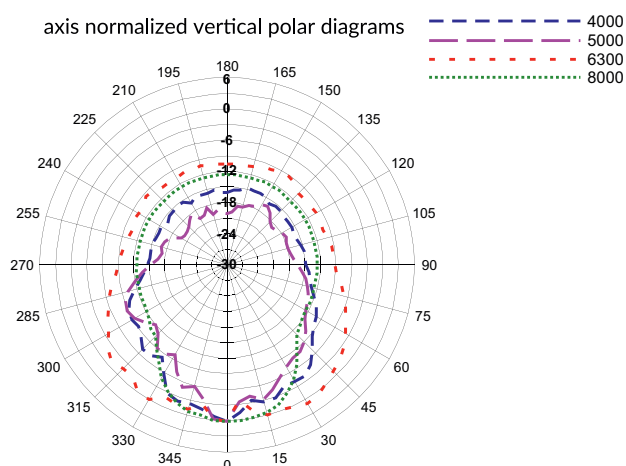
axis normalized vertical polar diagrams



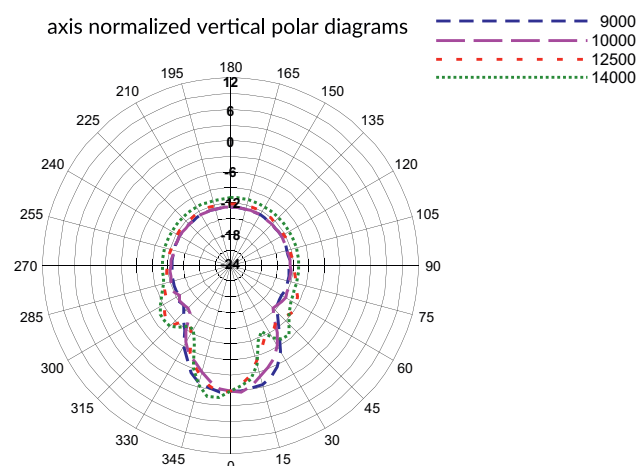
axis normalized vertical polar diagrams



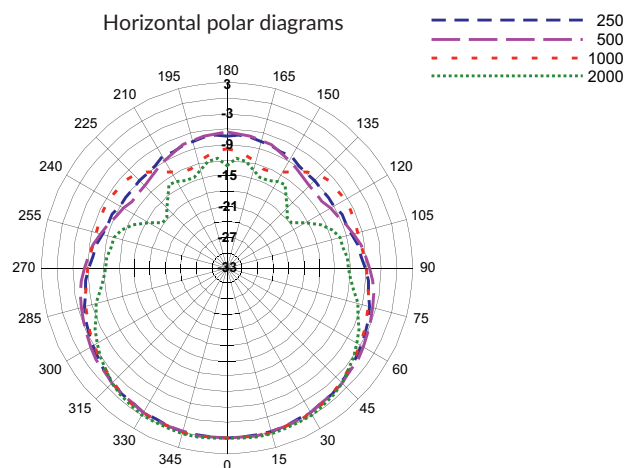
axis normalized vertical polar diagrams



axis normalized vertical polar diagrams



Horizontal polar diagrams



Horizontal polar diagrams

