

Processed Active Subwoofer

MAIN APPLICATIONS

Permanent installations in:

- Touring sound reinforcement
- Theatres, Stadiums, Concert halls, Arenas ...
- Ideal for both live applications assisted by one or both subs of the HORIZON VHA range.

MAIN FEATURES

- Self powered bass-reflex cabinet
- Class D 2500W amplifier
- 1 x 18" woofer with 4" coil
- Easy transport by 6 handles and predisposition for 4 wheels
- Cabinet in 0,70" birch plywood with anti-scratch varnish
- Wide range of accessory
- Completely manufactured in Italy

DESCRIPTION

Delivering optimal audience coverage with the ability to adapt to the requirements of the project at hand, the FBT HORIZON VHA 118.2SA represents a step forward in flexible sound reinforcement technology with exceptional sound quality, crafted in Italy with the no-compromise manufacturing excellence for which FBT is known. The FBT HORIZON VHA 118.2SA is a direct radiation ground subwoofer featuring a 1 x 18" long excursion woofer with a 4" coil, and the built-in amplifier is capable of delivering 2500W. The bass reflex cabinet offers substantial energy down to 30 Hz and is ideal for extending and reinforcing the low frequencies of the HORIZON VHA system line array in a ground-stack configuration. It includes presets to create various configurations with cardioid directivity, where some subwoofers are positioned rearward to acoustically cancel the sound pressure behind the cluster. The enclosure, optimized with BEM-type acoustic simulations to reduce resonance and turbulence in the ducts, is built from 0.70" (18 mm) birch plywood with a black polyurea finish. It has six aluminum handles, provisions for four wheels, two M20 stand sockets for horizontal or vertical use, and four support points designed to accommodate accessories in ground-stack configurations in conjunction with the VHA 406 and VHA 112 series. The front of the speaker is covered with a powder-coated perforated steel grille.

TECHNICAL SPECIFICATIONS

GENERAL

Code		45690
Configuration	way	Active bass reflex
Low frequency woofer	inch	18 - 3 coil
High frequency driver	inch	---

ACOUSTIC SPECIFICATIONS

Frequency response (@-6dB)	Hz	30 - Preset dependant
Sensitivity (@1W/1m)	dB	---
MAX SPL (cont/peak)	dB	137/143 half-space
Dispersion	H° x V°	Omnidirectional

INPUTS & OUTPUTS

Power supply connectors		PowerCon IN/OUT
Input connectors		1 x Male 1 x Female XLR IN/LINK

POWER SUPPLY

AC power consumption	W	650
Power cord	mt	5
	ft	16.4

AMPLIFIER

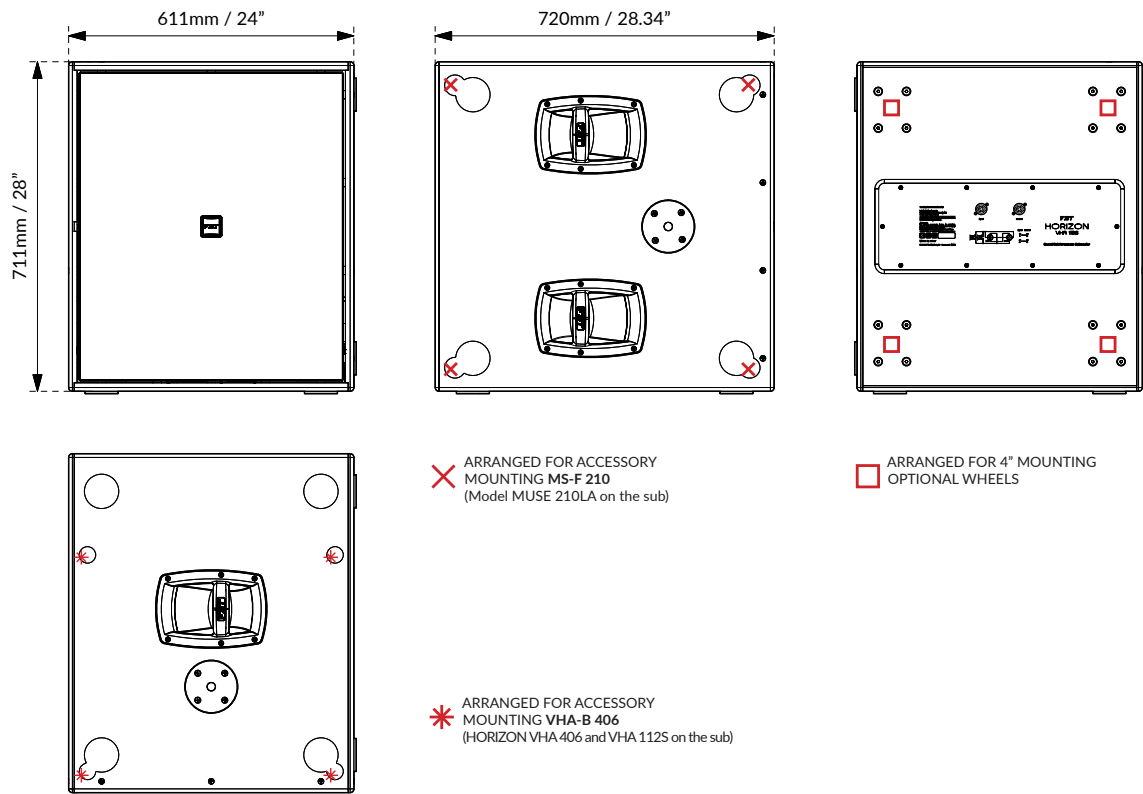
Built-in amplifier	W	2500
Buit-in amplifier peak	W	5000
Input impedance	Ohm	22k

MECHANICAL SPECIFICATIONS

Material	Cabinet	0.70" Birch plywood
	Grille	Steel
Net dimensions (WxHxD)	mm	611 x 711 x 720
	inch	24 x 28 x 28.34
Transport dimensions (WxHxD) with pallet	mm	810 x 900 x 710
	inch	31.89 x 35.43 x 27.95
Net weight	kg	60.80
	lb	134.04
Transport weight with pallet	kg	75
	lb	165.34



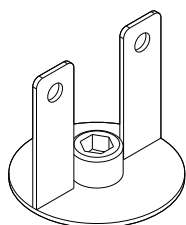
DIMENSIONAL DRAWING



CONTROL PANEL



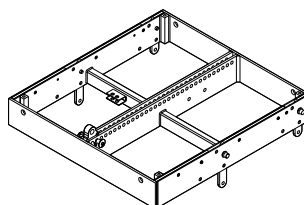
ACCESSORIES



MS-J 210

Metal Joint
Code: 39401

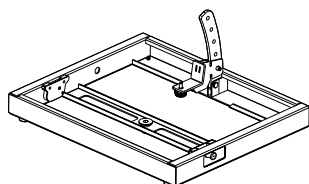
ø100 x 92mm
ø3.93 x 3.62inch
0.50 kg / 1.10 lb



MS-F 210

Flying Bar
Code: 38834

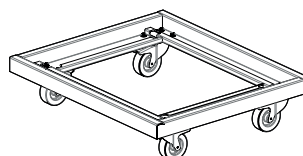
686 x 100 x 652mm
27 x 3.93 x 25.66inch
30 kg / 66.13 lb



VHA-B 406

Metal Base
Code: 41783

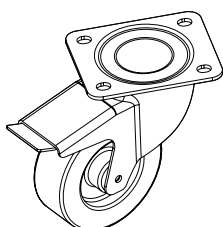
606 x 73 x 502mm
23.85 x 2.87 x 19.76inch
10.30 kg / 22.70 lb



VHA-T 118

Trolley with Wheels
Code: 42590

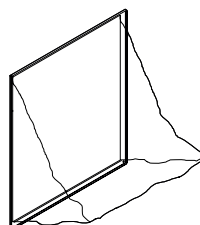
785 x 181 x 670mm
30.9 x 7.12 x 26.37inch
18.80 kg / 41.44 lb



KBW-1004S

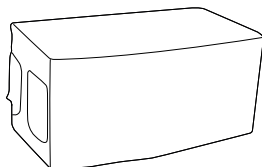
4 Wheels Kit with Brake
Code: 25197

ø100mm
ø4inch
4 kg / 8.81 lb



VHA-RC 118

Rain Cover
Code: 42465



VHA-C 118S

Nylon Cover without Wheels

VHA-CH 118S

Nylon Cover with Wheels