

Processed Active Subwoofer



MAIN APPLICATIONS

Permanent installations in:

- Touring sound reinforcement.
- Theatres, Stadiums, Concert halls, Arenas ...
- Ideal for reinforcing and extending the low range of the HORIZON VHA system.

MAIN FEATURES

- Self powered bass-reflex cabinet
- Class D 2500W amplifier
- 1 x 18" woofer with 4" coil - neodymium
- DANTE audio streaming on board
- Network interface TCP/IP - AES70 compatible
- OLED display and encoder with push
- Ethercon RJ45 input & output
- Cabinet in 0,70" birch plywood with black polyurea finish
- Wide range of accessories
- Completely manufactured in Italy

DESCRIPTION

The FBT HORIZON VHA 118SND is a direct radiation ground subwoofer, featuring a 1 x 18" long excursion woofer with a 4" coil and 2500W Class D amplification, capable of producing 143 dB SPL. The bass reflex cabinet offers substantial energy down to 30 Hz and is ideal for extending and reinforcing the low frequencies of the HORIZON VHA system line array in a ground-stack configuration. It includes presets to create various configurations with cardioid directivity, where some subwoofers face rearwards from the audience to acoustically cancel the sound pressure behind the cluster. The enclosure, optimized with BEM-type acoustic simulations to reduce resonance and turbulence in the ducts, is built from 0.70" (18mm) birch plywood with a black polyurea finish. It has six aluminum handles, provisions for four wheels, two M20 stand sockets for horizontal or vertical use, and four support points set up to accommodate accessories in ground-stack configurations in conjunction with the VHA 406ND and VHA 112SND models. The front of the speaker is covered with a powder-coated perforated steel grille. The highlight of the project is the new 2500W amplification module with a built-in TCP/IP network interface. Based on the AES70 standard (OCA Alliance), it communicates with FBT's "INFINITO" management suite remote control software and receives 24-bit, 48-96kHz digital audio streaming from all devices compatible with the "DANTE" standard. The HORIZON VHA 118SND is equipped with intelligent forced ventilation and an OLED display with an encoder for parameter settings. A high-brightness blue front LED allows remote identification of the device, even in daylight.



TECHNICAL SPECIFICATIONS

GENERAL		
Code	VHA 118SN	44604
	VHA118SND	44257
Configuration	way	Active bass-reflex subwoofer
Low frequency woofer	inch	18 - 4 coil
High frequency driver	inch	---

ACOUSTIC SPECIFICATIONS		
Frequency response (@-6dB)	Hz	30 - present dependant
MAX SPL (cont/peak)	dB	137 / 143 half-space
Dispersion	H° x V°	Omnidirectional

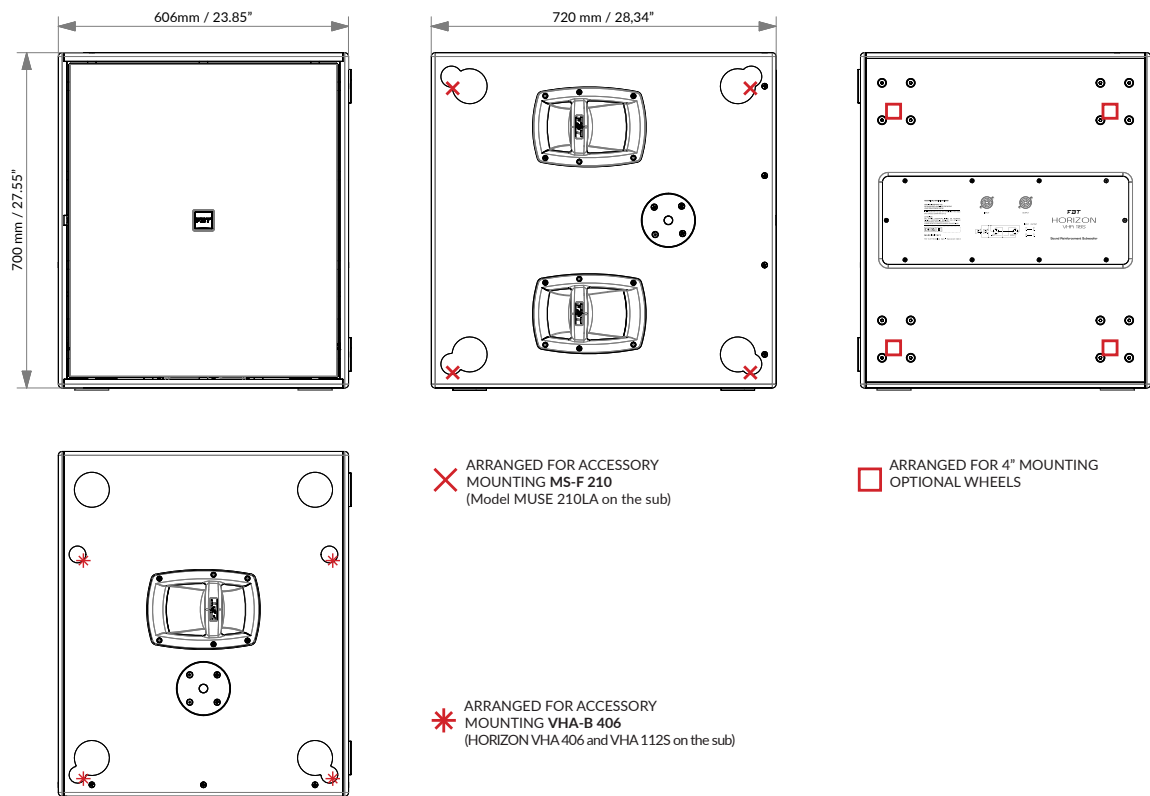
INPUTS & OUTPUTS		
Power supply connectors		PowerCon IN/OUT
Input connectors		1 x Male 1 x Female XLR IN/LINK
Input / Output NET		NET IN/OUT (EtherCon)

POWER SUPPLY		
AC power consumption	W	650
Power cord	mt	5
	ft	16.4

AMPLIFIER		
Built-in amplifier	W	2500
Buit-in amplifier peak	W	5000
Input impedance	Ohm	22k

MECHANICAL SPECIFICATIONS		
Material	Cabinet	0.70" Birch plywood
	Grille	Steel
Handles		6
Net dimensions (WxHxD)	mm	611 x 711 x 720
	inch	24 x 28 x 28.34
Transport dimensions (WxHxD)	mm	810 x 900 x 710
	inch	31.89 x 35.43 x 27.95
Net weight	kg	61.20
	lb	134.92
Transport weight	kg	75.50
	lb	166.44

DIMENSIONAL DRAWING



CONTROL PANEL



1. XLR input
2. XLR link output
3. Port compatible with EtherCON/RJ45 connectors used for Ethernet network input for remote control and monitoring via INFINITO MANAGEMENT SOFTWARE
4. Port compatible with etherCON/RJ45 connectors used for the daisy chain output of the INFINITO SOFTWARE MANAGEMENT remote control and monitoring Ethernet network
5. General digital volume to control the level of signal. Press to enter the DSP menu and turn the knob to identify and select the parameters
6. Displaying of menus and DSP settings

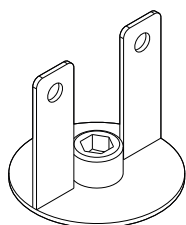
SOFTWARE INFINITO



INFINITO is a real revolution in the FBT world that enhance the user experience in a new level of performance and simplicity! It's a Windows software platform totally developed in house by FBT R&D team that offers real time monitoring of the internal sensors and status of connected devices, fast IN/OUT Vu-meters, controls of all the parameters, group management, warnings readout. More than 100 devices can be connected on the same TCP/IP network with the added convenience of auto IP address assignment.

Download it from our website: www.fbt.it

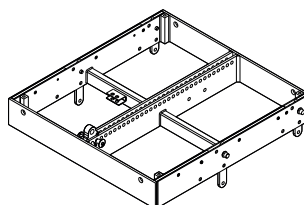
ACCESSORIES



MS-J 210

Metal Joint
Code: 39401

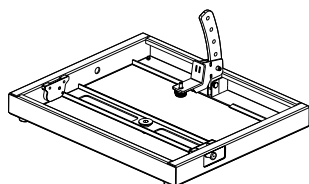
ø100 x 92mm
ø3.93 x 3.62inch
0.50 kg / 1.10 lb



MS-F 210

Flying Bar
Code: 38834

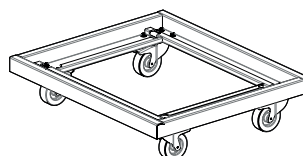
686 x 100 x 652mm
27 x 3.93 x 25.66inch
30 kg / 66.13 lb



VHA-B 406

Metal Base
Code: 41783

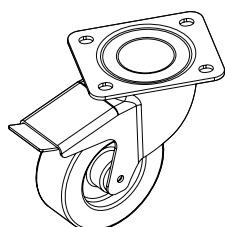
606 x 73 x 502mm
23.85 x 2.87 x 19.76inch
10.30 kg / 22.70 lb



VHA-T 118

Trolley with Wheels
Code: 42590

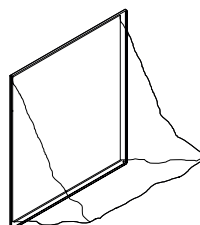
785 x 181 x 670mm
30.9 x 7.12 x 26.37inch
18.80 kg / 41.44 lb



KBW-1004S

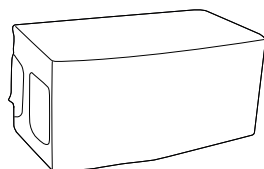
4 Wheels Kit with Brake
Code: 25197

ø100mm
ø4inch
4 kg / 8.81 lb



VHA-RC 118

Rain Cover
Code: 42465



VHA-C 118S

Nylon Cover without Wheels

VHA-CH 118S

Nylon Cover with Wheels