

# Precision Coverage Vertical Active Array



## MAIN APPLICATIONS

Permanent installations in:

- Theatres, Concert Halls, Clubs, Places of Worship, Conference Rooms, Indoor Sports, Arenas & Stadiums

Sound reinforcement for live events:

- Touring, Bands, Orchestras



## MAIN FEATURES

- Compact 2-way line array system in bass reflex
- 2 x 10" woofers with 2.5" coil
- 2 x custom B&C HF compression drivers with 1" throats
- Frequency response from 55Hz - 20kHz @ -6dB
- Class D amplifiers, 800W RMS LF, 400W RMS HF with switching power supply
- DANTE audio streaming on board
- Network interface TCP/IP - AES70 compatible
- OLED DISPLAY and encoder with PUSH for easy onboard control
- Ethercon RJ45 input and output for daisy-chain
- Remote control by INFINITO System Management Suite
- High SPL capability: 136dB
- Integrated rigging hardware
- Birch plywood cabinet
- Front led identification Hi-power led
- Completely Manufactured in Italy

## DESCRIPTION

An innovative line array system with refined, technologically-advanced engineering.. The modularity from 2 to 16 speakers allows use in a wide variety of situations. It has two custom 250mm woofers with 64mm high excursion voice coil and two custom B&C drivers with 25mm throat and 44mm voice coil. The 90° dispersion waveguide, is designed to present an optimal load to the driver's membrane starting from 800Hz and allows the propagation of a flat acoustic wave up to over 18Khz, strictly respecting the most stringent physical criteria for an ideal cylindrical source. The acoustic configuration with the central horn allows for a symmetrical horizontal dispersion. The cabinet is made of 15mm birch plywood with two die-cast aluminium handles. The hardware integrated in the cabinet allows the suspension of 16 boxes with a 10:1 safety factor and an inclination from 0° to 10° at a step of 1°. The design of the no-compromise mechanics in terms of practicality and speed of set-up of the system makes it particularly suitable for daily touring movements. The summit of the entire project is the 800+400W RMS amplification module with TCP/IP network interface. Based on the OCA ALLIANCE AES70 standard, it communicates with the 'INFINITO system management suite' remote control software and receives 24-bit 48-96Khz digital audio streaming from all devices compatible with the 'DANTE' standard. The module is housed in an aluminum chassis with intelligent forced ventilation and is equipped with an OLED display with encoder for parameter setting. A high-brightness blue front LED allows remote identification of the device also in daylight.

TECHNICAL SPECIFICATIONS

GENERAL		
Code	210LN	44599
	210LND	44258
Configuration	way	2 active reflex line array module
Low frequency woofer	inch	2 x 10 - 2.5 coil
High frequency driver	inch	2 x 1 - 1.7 coil

ACOUSTIC SPECIFICATIONS		
Frequency response (@-6dB)	Hz	55 - 20k
MAX SPL (cont/peak)	dB	129 / 136
Dispersion	H° x V°	90 x 10 - dependant upon the number of elements

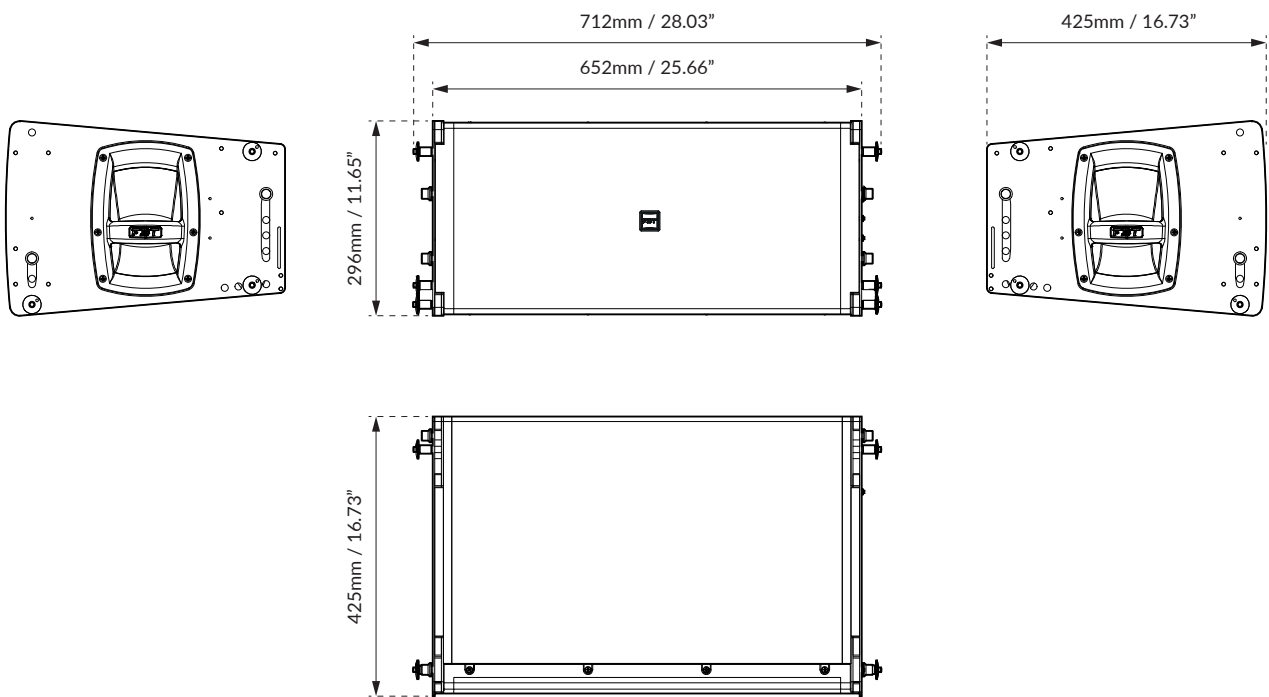
INPUTS & OUTPUTS		
Power supply connectors		PowerCon IN/OUT
Input connectors		2 x XLR IN/OUT
Input / Output NET		NET IN/OUT (EtherCon)

POWER SUPPLY		
AC power requirement	W	600
Power cord	mt	5
	ft	16.4

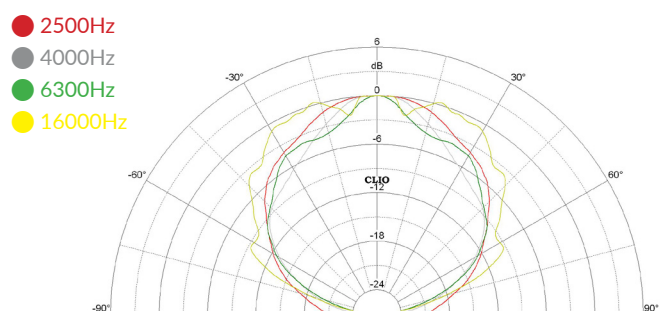
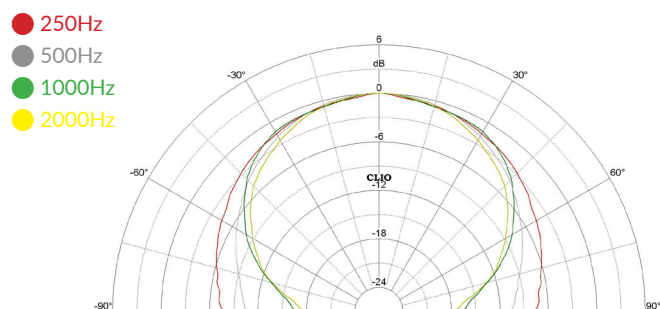
AMPLIFIER		
Buit-in amplifier (LF/HF)	W	800 / 400
Buit-in amplifier peak (LF/HF)	W	1600 / 800
Input impedance	Ohm	22k

MECHANICAL SPECIFICATIONS		
Material	Cabinet	Wooden
	Grille	Heavy-duty metal
Net dimensions (WxHxD)	mm	652 x 296 x 425
	inch	25.66 x 11.65 x 16.73
Transport dimensions (WxHxD)	mm	530 x 810 x 390
	inch	20.87 x 31.89 x 15.35
Net weight	kg	38
	lb	83.77
Transport weight	kg	41
	lb	90.38

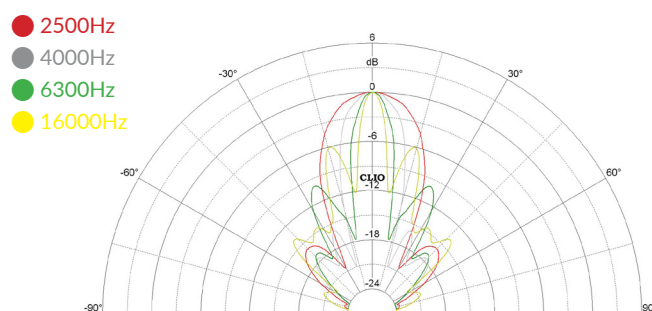
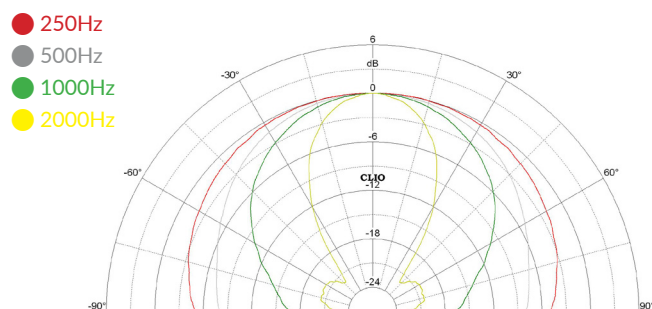
DIMENSIONAL DRAWINGS



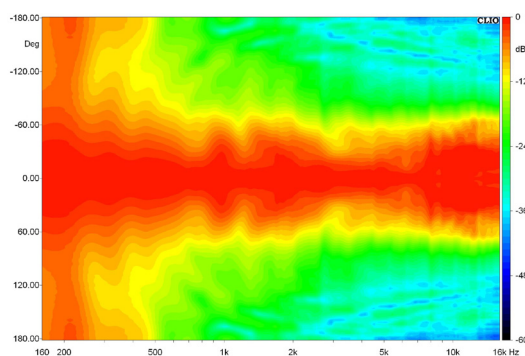
## HORIZONTAL POLAR DIAGRAMS



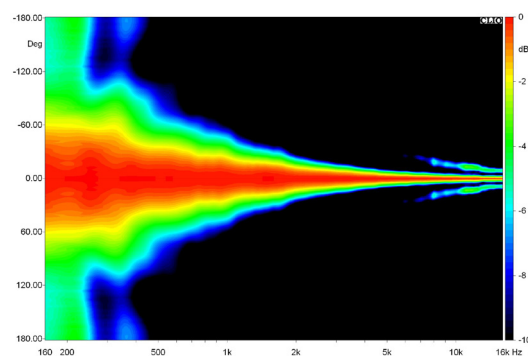
## VERTICAL POLAR DIAGRAMS



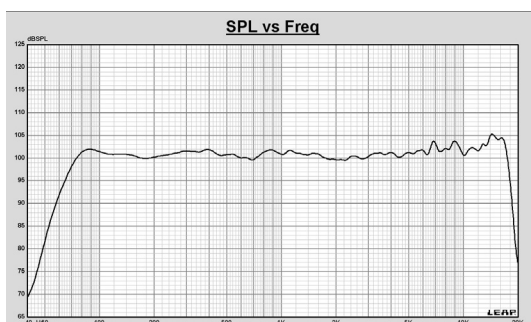
## HORIZONTAL BEAMWIDTHTH



## VERTICAL BEAMWIDTHTH



## FREQUENCY RESPONSE



## CONTROL PANEL



1. XLR input
2. XLR link output
3. Port compatible with EtherCON/RJ45 connectors used for Ethernet network input for remote control and monitoring via INFINITO MANAGEMENT SOFTWARE
4. Port compatible with etherCON/RJ45 connectors used for the daisy chain output of the INFINITO SOFTWARE MANAGEMENT remote control and monitoring Ethernet network
5. General digital volume to control the level of signal. Press to enter the DSP menu and turn the knob to identify and select the parameters
6. Displaying of menus and DSP settings

## SOFTWARE INFINITO

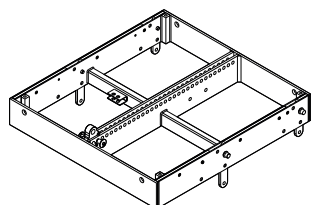


INFINITO is a real revolution in the FBT world that enhance the user experience in a new level of performance and simplicity! It's a Windows software platform totally developed in house by FBT R&D team that offers real time monitoring of the internal sensors and status of connected devices, fast IN/OUT Vu-meters, controls of all the parameters, group management, warnings readout.

More than 100 devices can be connected on the same TCP/IP network with the added convenience of auto IP address assignment.

Download it from our website: [www.fbt.it](http://www.fbt.it)

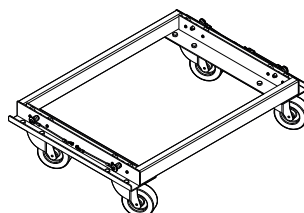
## ACCESSORIES



### MS-F 210

**Flying Bar**  
Code: 38834

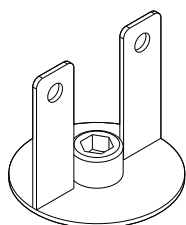
686 x 100 x 652mm  
27 x 3.93 x 25.66inch  
30 kg / 66.13 lb



### MS-T 210

**Trolley with Wheels**  
Code: 38886

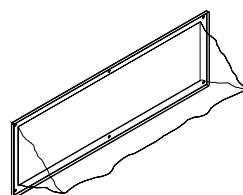
722 x 182 x 500mm  
28.42 x 7.18 x 19.68inch  
14 kg / 30.86 lb



### MS-J 210

**Metal Joint**  
Code: 39401

ø100 x 92mm  
ø3.93 x 3.62inch  
0.50 kg / 1.10 lb



### MS-C 210

**Rain Cover**  
Code: 39340

0.50 kg / 1.10 lb