

All Weather Speaker

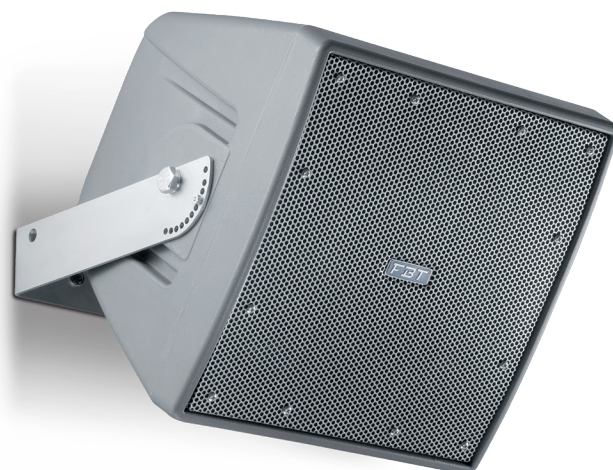
IP55

MAIN APPLICATIONS

- Convention centers
- Athletic fields
- Stadiums
- Theme parks
- Swimming pools
- Cruise ships
- Malls
- Ballrooms
- Outdoor background music

MAIN FEATURES

- Subwoofer
- Sturdy molded polyethylene curved enclosure
- 14" woofer with 3" coil
- Line transformer (optional)
- 4 wires cable to select the power tapping
- IP55 weather resistant
- Standard grey finish RAL 7011
- Completely manufactured in Italy



DESCRIPTION

The SHADOW 114S is a weatherproof subwoofer loudspeaker system offering substantial power and efficiency for a variety of professional indoor or outdoor applications. The low frequency transducer is a 14" woofer with a 3" voice coil. An optional transformer is also available providing impedance matching to 100V lines with 300W power. The cabinet is a single piece rotational moulded in polyethylene, fully UV protected. The cabinet is equipped with a stainless steel Ubracket. The grille is in custom perforated stainless steel with 3 layers of protection. The SHADOW 114S meets the requirements of IP55 code (International Protection Rating).

TECHNICAL SPECIFICATIONS

GENERAL

| | | |
|-----------------------|-------|-------------|
| Code | 114S | 36196 |
| | 114ST | 37943 |
| Configuration | way | 1 |
| Low frequency woofer | inch | 14 - 3 coil |
| High frequency driver | inch | --- |

ACOUSTIC SPEC.

| | | |
|-----------------------|--------------|-----------------|
| Frequency response | (@-6dB) | 60Hz - 400Hz |
| Crossover frequency | kHz | External |
| Sensitivity (@1W,1m) | dB | 97 |
| MAX SPL (cont/peak) | dB | 125.5 / 129.5 |
| Dispersion | H x V | Omnidirectional |
| Recommended HP filter | Hz - dB oct. | 40 - 24 |

INPUTS & OUTPUTS

| | | |
|------------|--|--------------|
| Connectors | | 4 wire cable |
|------------|--|--------------|

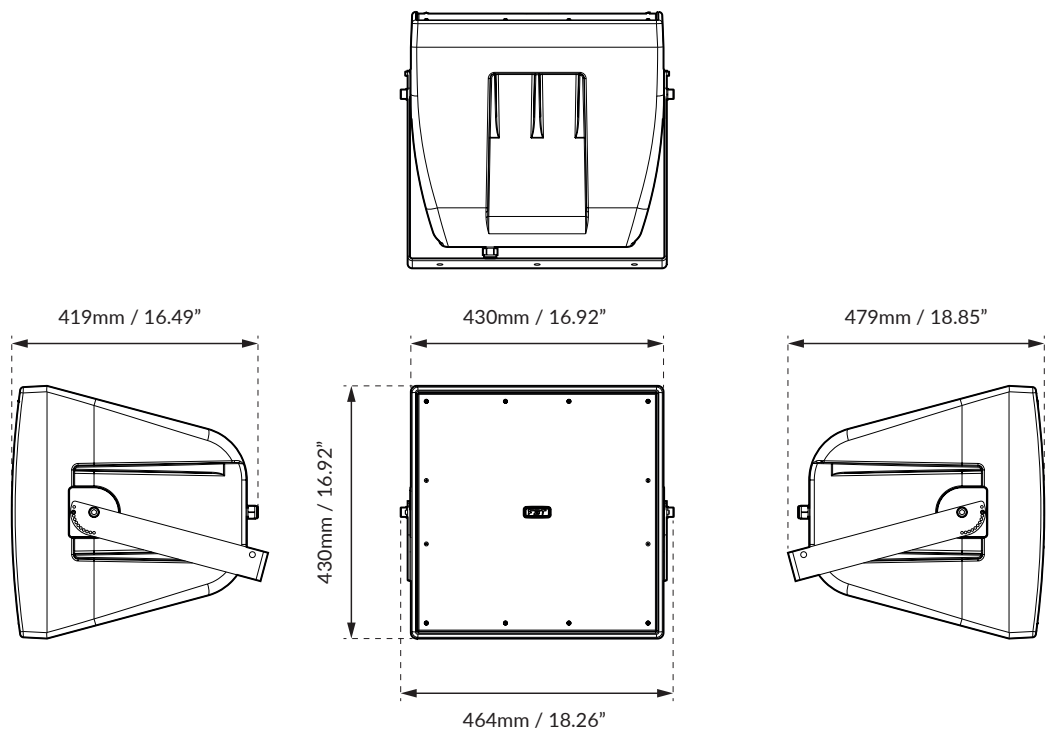
AMPLIFIER

| | | |
|------------------------------|-------|-----------|
| Transformer (optional) | V / W | 100 / 300 |
| Recommended amplifier | W RMS | 700 |
| Long term power | W | 350 |
| Short term power (IEC 268-5) | W | 1400 |
| Nominal impedance | Ohm | 8 |

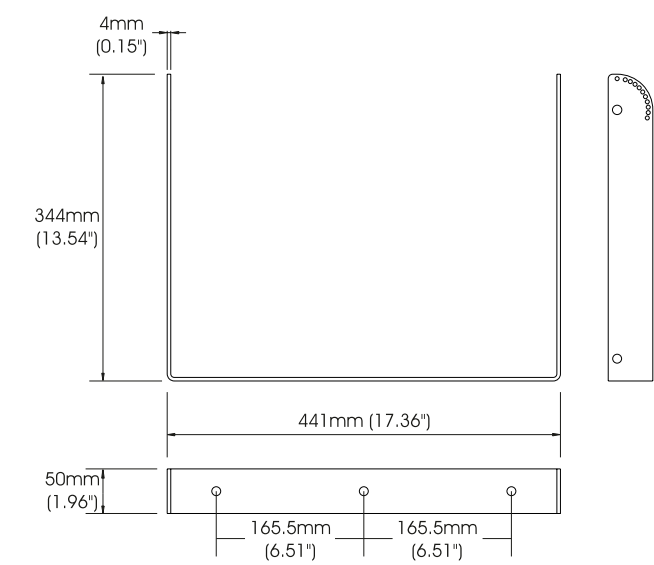
MECHANICAL SPEC.

| | | |
|------------------------------|------------|--|
| Material | | Polyethylene rotomolded |
| Net dimensions (WxHxD) | mm inch | 464 x 430 x 479 18.27 x 16.93 x 18.86 |
| Transport dimensions (WxHxD) | mm inch | 585 x 590 x 510 23.03 x 23.23 x 20.08 |
| Net weight | kg lb | 15.50 (17.50) 34.17 (38.58) |
| Transport weight | kg lb | 20 (20.30) 44.09 (44.75) |

DIMENSIONAL DRAWING



INCLUDED ACCESSORY



FREQUENCY RESPONSE DIAGRAM

