

# Passive Reinforcement Speaker

## MAIN APPLICATIONS

- Band P.A.
- Personal monitor
- Small theatres & Auditoriums
- Piano bar
- DJ
- Stage monitor
- Conference rooms
- Fixed installations in live clubs
- Pubs
- Gyms

## MAIN FEATURES

- 2-way passive sound reinforcement speaker
- 250W RMS recommended amplifier
- 0.59" birch plywood scratch resistant enclosure
- Rotatable horn
- Built-in passive crossover
- Control panel features 2 x Speakon NL4 In & Link
- Completely manufactured in Italy



## DESCRIPTION

The FBT VENTIS 108 has been designed to meet the highest standards in both performance and aesthetic appeal. The FBT VENTIS are as suitable for fixed installation, portable use, as they are for use on the stage. The FBT VENTIS 108 incorporating a 8" LF woofer with 2" voice coil, custom made for FBT and 1" exit throat B&C HF compression driver with 1.4" voice coil; a fully rotatable constant directivity horn ensure accurate coverage (80° H x 50° V). With a frequency range from 70Hz to 18kHz the FBT VENTIS 108 speaker provide high fidelity sound for both speech and music applications with a MAX SPL of 126dB. Ideal for small fixed installations the FBT VENTIS 108 speaker system have an impedance of 8Ω and the internal crossover is at a fixed frequency of 1.8kHz. Constructed in 0.59" birch plywood, include one integrate handle. Rear panel connections features 2 x Neutrik Speakon NL4. The optional mounting bracket allow the FBT VENTIS 108 speaker to be surface mounted on walls or ceilings.

## TECHNICAL SPECIFICATIONS

### GENERAL

Code		41213
Configuration	way	2
Low frequency woofer	inch	8 - 2 coil
High frequency driver	inch	1 - 1.4 coil

### ACOUSTIC SPECIFICATIONS

Frequency response (@-6dB)	Hz	70 - 18k
Sensitivity (@1W/1m)	dB	95
MAX SPL peak**	dB	121 / 126
Dispersion	H° x V°	80 x 50 rotatable
Recommended HP filter	Hz - 24 oct	50 - 24
Crossover frequency	Hz	1.8k

### INPUTS & OUTPUTS

Input connectors		2 x Neutrik speakon NL4
------------------	--	-------------------------

### AMPLIFIER

Recommended amplifier	W RMS	250
Long term power*	W	125
Short term power (IEC 268-5)	W	500
Nominal impedance	Ohm	8

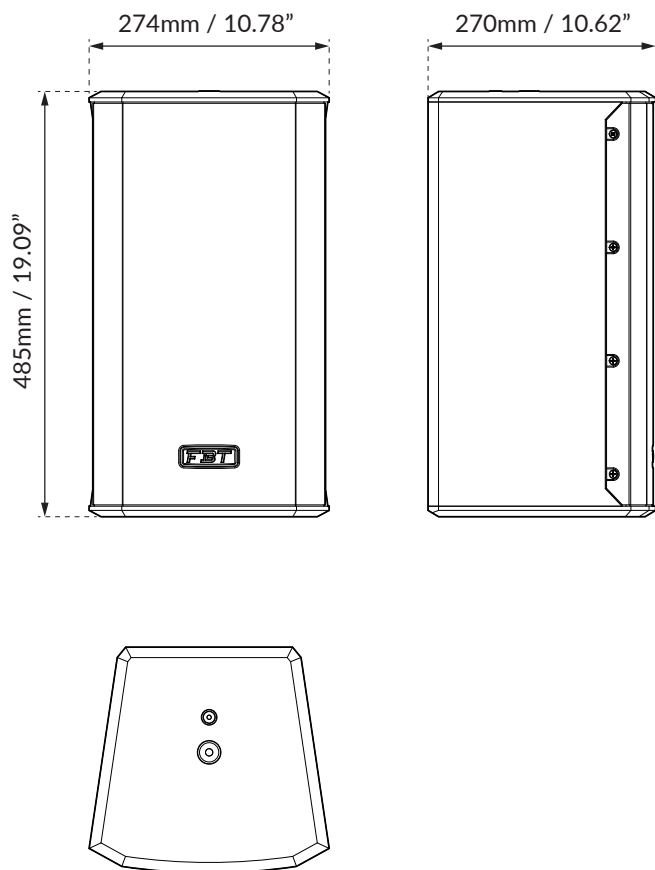
### MECHANICAL SPECIFICATIONS

Material		0.59" birch plywood
Net dimensions (WxHxD)	mm	274 x 485 x 270
	inch	10.78 x 19.04 x 10.63
Transport dimensions (WxHxD)	mm	355 x 545 x 385
	inch	13.98 x 21.46 x 15.16
Net weight	kg	11.80
	lb	26.01
Transport weight	kg	13.30
	lb	29.32

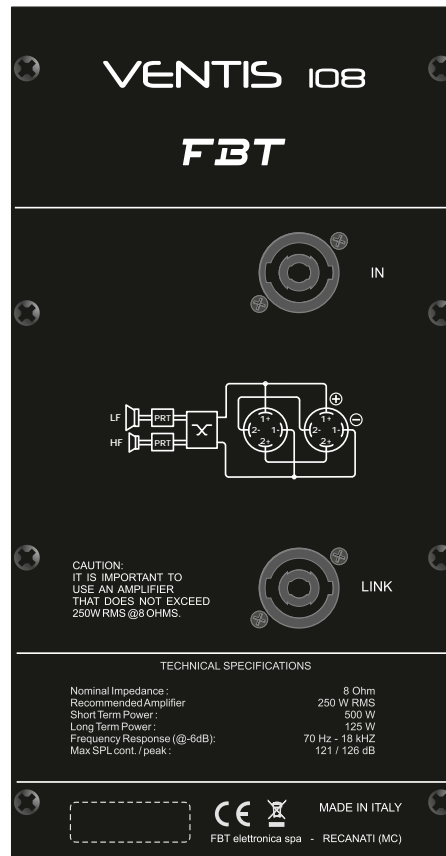
\* 100 hour power test, IEC-268-5 standard (display the long term RMS voltage handing, using IEC filtered 6dB crest factor pink noise).

\*\*Based on peak level of 6dB crest factor random noise signal used for test.

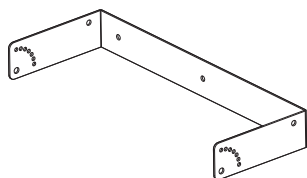
## DIMENSIONAL DRAWING



## CONTROL PANEL



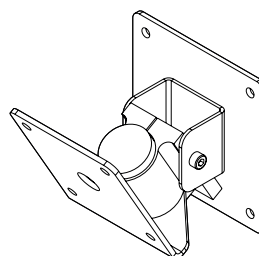
## ACCESSORIES



### VN-U 108

**Wall Metal Bracket**  
Code: 41220

491 x 70 x 220mm  
19.33 x 2.75 x 8.66inch  
1.80 kg / 3.96 lb



### AC-W 568

**Directional Wall Bracket**  
Black code: 36987  
White code: 37330

100 x 127 x 77.5mm  
3.93 x 4.99 x 3.05inch  
2.20 kg / 4.85 lb