

# Passive Reinforcement Speaker

## MAIN APPLICATIONS

- Band P.A.
- Personal monitor
- Small theatres & Auditoriums
- Piano bar & DJ
- Stage monitor
- Conference rooms
- Fixed installations in live clubs & Pubs
- Gyms

## MAIN FEATURES

- 2-way passive sound reinforcement speaker
- 400W RMS recommended amplifier
- 0.47" birch plywood scratch resistant enclosure
- Rotatable horn
- Built-in passive crossover
- Control panel features 2 x Speakon NL4 in & link
- Completely manufactured in Italy



## DESCRIPTION

The FBT VENTIS 206 has been designed to meet the highest standards in both performance and aesthetic appeal. The FBT VENTIS 206 can be deployed as a front fill, an under-balcony fill, as a main providing pristine speech intelligibility or simply as companion of a subwoofer. The FBT VENTIS 206 incorporating a 2 x 6.5" LF woofer with 1.5" voice coil, custom made for FBT and 1" exit throat B&C HF compression driver with 1.4" voice coil; a fully rotatable constant directivity horn ensure accurate coverage (70° H x 50° V). With a frequency range from 75Hz to 20kHz the FBT VENTIS 206 speaker provide high fidelity sound for both speech and music applications with a MAX SPL of 127dB. Ideal for small fixed installations the FBT VENTIS 206 speaker system have an impedance of 8Ω and the internal crossover is at a fixed frequency of 2kHz. Constructed in 0.47" birch plywood, the FBT VENTIS 206 has one aluminium handle. Rear panel connections features 2 x Neutrik Speakon NL4. The optional mounting bracket allow the FBT VENTIS 206 speaker to be surface mounted on walls or ceilings.

## TECHNICAL SPECIFICATIONS

### GENERAL

Code		40679
Configuration	way	2
Low frequency woofer	inch	2 x 6.5 - 1.5 coil
High frequency driver	inch	1 - 1.4 coil

### ACOUSTIC SPECIFICATIONS

Frequency response (@-6dB)	Hz	75 - 20k
Sensitivity (@1W/1m)	dB	97
MAX SPL peak**	dB	123 / 127
Dispersion	H° x V°	70 x 50 rotatable
Recommended HP filter	Hz - 24 oct	60 - 24
Crossover frequency	Hz	2k

### INPUTS & OUTPUTS

Input connectors		2 x Neutrik speakon NL4
------------------	--	-------------------------

### AMPLIFIER

Recommended amplifier	W RMS	400
Long term power*	W	200
Short term power (IEC 268-5)	W	800
Nominal impedance	Ohm	8

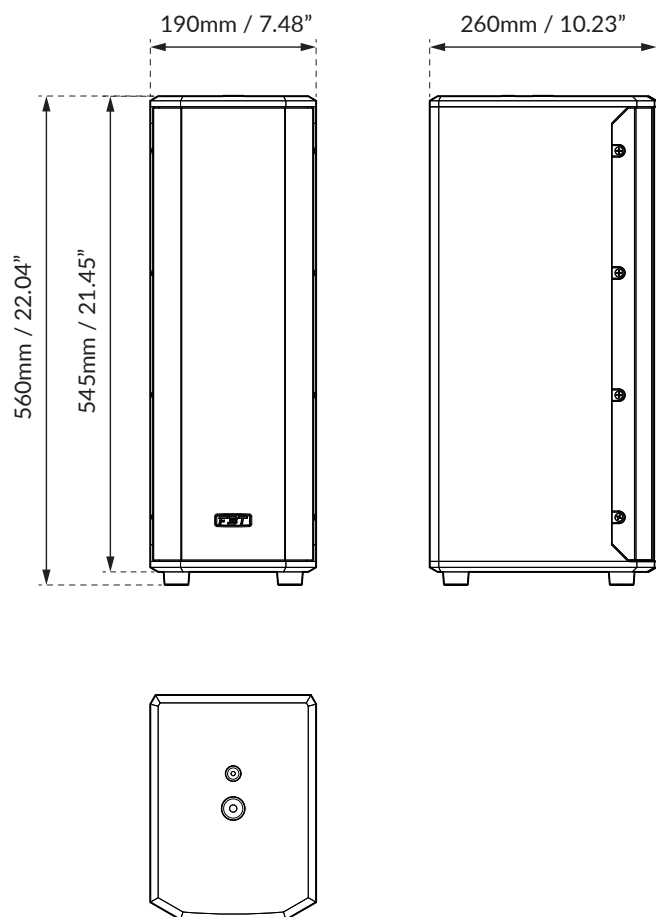
### MECHANICAL SPECIFICATIONS

Material		0.47" birch plywood
Net dimensions (WxHxD)	mm	190 x 560 x 260
	inch	7.48 x 22.04 x 10.23
Transport dimensions (WxHxD)	mm	360 x 660 x 290
	inch	14.17 x 25.98 x 11.42
Net weight	kg	12.10
	lb	26.67
Transport weight	kg	13.50
	lb	29.76

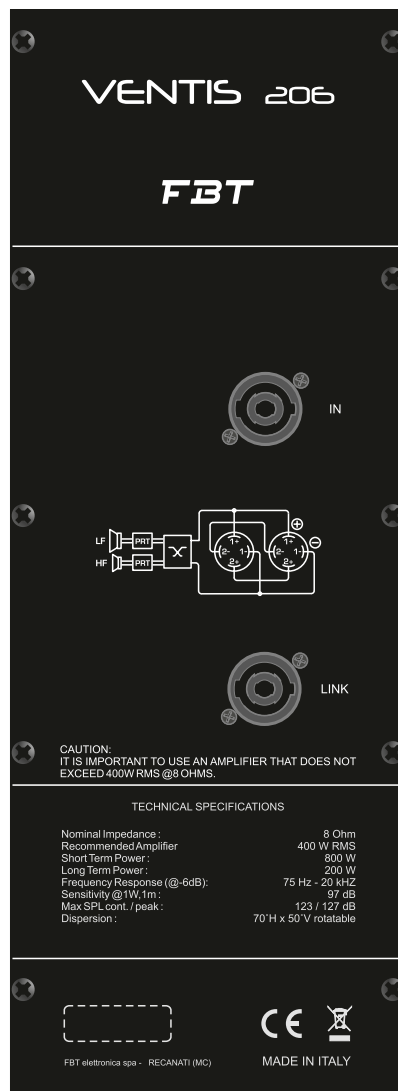
\* 100 hour power test, IEC-268-5 standard (display the long term RMS voltage handling, using IEC filtered 6dB crest factor pink noise).

\*\*Based on peak level of 6dB crest factor random noise signal used for test.

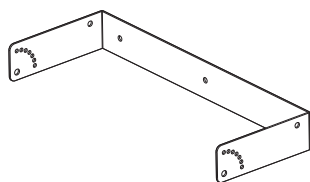
## DIMENSIONAL DRAWING



## CONTROL PANEL



## ACCESSORIES



### VN-U 206

**Wall Metal Bracket**  
Code: 40727

491 x 70 x 220mm  
19.33 x 2.75 x 8.66inch  
1.80 kg / 3.96 lb

## NOTE

**⚠ WARNING |** This FBT loudspeaker should be suspended overhead only in accordance with the procedures and limitations specified in the user's manual. This system should be suspended in compliance with local and state overhead suspension ordinances. The VENTIS speakers use only with FBT mount for wall installation.