

Precision Coverage Vertical Active Array

MAIN APPLICATIONS

- Permanent installations in:
- Theatres, Concert Halls, Clubs, Places of Worship, Conference Rooms, Indoor Sports, Arenas & Stadiums
- Sound reinforcement for live events:
- Touring, Bands, Orchestras

MAIN FEATURES

- Strong birch plywood cabinet
- Class D amplifiers, 600W RMS to the LF, 300W RMS to the HF
- 2 x 10" woofers with 2.5" coil
- 2 x custom B&C HF compression drivers with 1" throats
- DSP on board with 8 preset, integrated rigging hardware
- 90° horizontal waveguide up to 18kHz
- Control panel with XLR «in&link», HF level, preset, HP filter, GND lift switch
- High SPL capability: 135dB
- Completely Manufactured in Italy

DESCRIPTION

A true line array system encompassing advanced technology and refined Italian engineering, these are the principles behind MUSE, a new sound reinforcement solution from FBT that redefines the modern line array in terms of power, size, light weight, flexibility and ease of use. The MUSE 210LA is the ideal choice when line array performance is needed and a fast and easy set up is a must. The modularity of the FBT MUSE 210LA makes it extremely flexible for a wide range of applications, from a small two cabinets PA system to an elaborate line array system consisting of up to 16 FBT MUSE 210LA cabinets along with multiple FBT SUBLINE 218SA subs for large concert events. The system features 2 x 10" woofers with 2.5" voice coil and two custom B&C HF compression drivers with 1" throats. The system is powered from a 600W RMS amplifier in Class D technology for LF and a 300W RMS amplifier for HF; the amplifier features a solid lightweight die-cast aluminium structure that permits to protect the electronics against dust, avoid any air loss through the controls and maximize heat loss by using the woofer ventilation instead of a cooling fan. The waveguide, optimized by BEM finite element simulation, offers 90° horizontal dispersion; engineered to be perfectly integrated with the HF compression driver it allows the dispersion of a flat acoustic wave to over 18kHz. The FBT MUSE 210LA cabinets coupling hardware is internally integrated and allows the suspension of 16 arrays with a splay angle between 0° - 10° with 1° step. The onboard DSP offers a choice of eight presets, allowing users to easily configure their MUSE 210LA system depending on the curvature of arrays and the number of speakers used. 3 status LEDs, On/Peak/Lmt-Prt, are provided for monitoring the system. FBT MUSE 210LA cabinets are moulded on a 0.59" (15mm) birch plywood, and incorporate two die cast aluminium handles; the front is protected by a heavy duty metal grille with anti-resonance spacers and exclusive synthetic cloth to protect the drivers. The FBT MUSE 210LA provides a wide range of hardware accessories for flying and ground stacked configurations.

TECHNICAL SPECIFICATIONS

GENERAL

Code		38773
Configuration	way	2
Low frequency woofer	inch	2 x 10 - 2.5 coil
High frequency driver	inch	2 x 1 - 1.7 coil

ACOUSTIC SPECIFICATIONS

Frequency response (@-6dB)	Hz	55 - 20k
MAX SPL (cont/peak)**	dB	128 / 135
Dispersion	H° x V°	90 x 10 - dependant upon the number of elements

INPUTS & OUTPUTS

Input connectors		XLR with loop
------------------	--	---------------

POWER SUPPLY

AC power requirement	VA	640
Power cord	mt	7
	ft	22.96

AMPLIFIER

Built-in amplifier*	Cont. (LF/HF)	W RMS	400 / 200
	MAX (LF/HF)	W RMS	600 / 300
	Peak (LF/HF)	W	1200 / 600

MECHANICAL SPECIFICATIONS

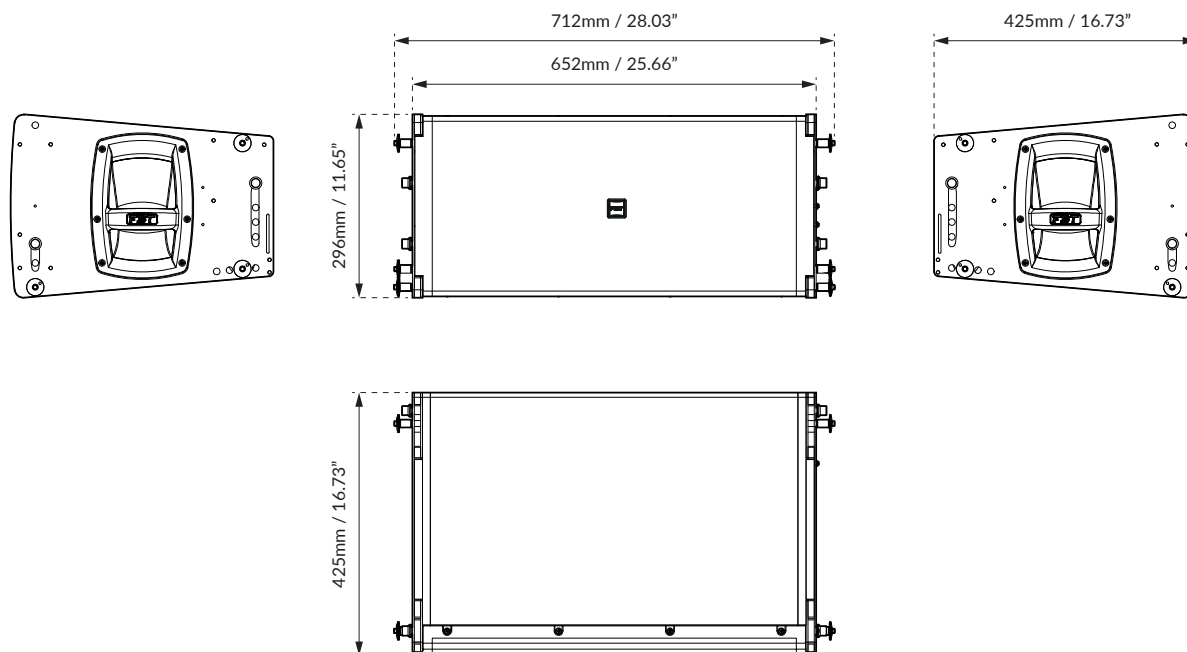
Material		0.59" Birch plywood
Net dimensions (WxHxD)	mm	652 x 296 x 425
	inch	25.66 x 11.65 x 16.73
Transport dimensions (WxHxD)	mm	530 x 810 x 390
	inch	20.87 x 31.89 x 15.35
Net weight	kg	38.50
	lb	84.87
Transport weight	kg	41
	lb	90.38

* CONT.: 500mS, rms power on nominal speaker impedance
 MAX.: 2mS burst, rms power on nominal speaker impedance
 MAX PEAK: based on max peak output voltage and nominal speaker impedance

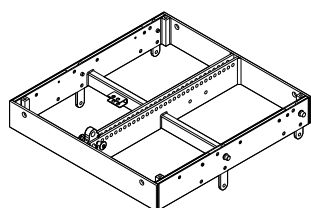
**CONT SPL: free space, based on power amp rating and LF transducer average sensitivity data, 125mS time average
 PEAK SPL: free space, based on MAX peak power amp rating and system peak sensitivity, 10mS time average



DIMENSIONAL DRAWINGS



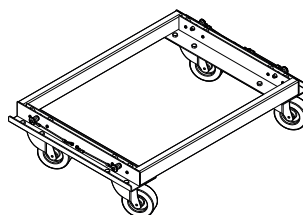
ACCESSORIES



MS-F 210

Flying Bar
Code: 38834

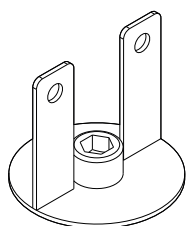
686 x 100 x 652mm
27 x 3.93 x 25.66inch
30 kg / 66.13 lb



MS-T 210

Trolley with Wheels
Code: 38886

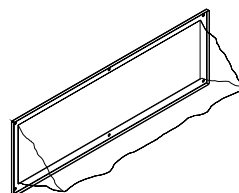
722 x 182 x 500mm
28.42 x 7.18 x 19.68inch
14 kg / 30.86 lb



MS-J 210

Metal Joint
Code: 39401

ø100 x 92mm
ø3.93 x 3.62inch
0.50 kg / 1.10 lb

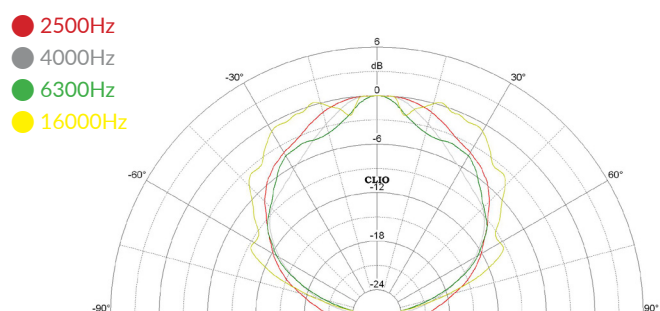
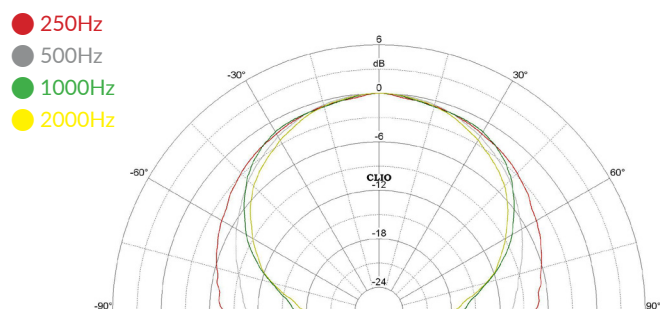


MS-C 210

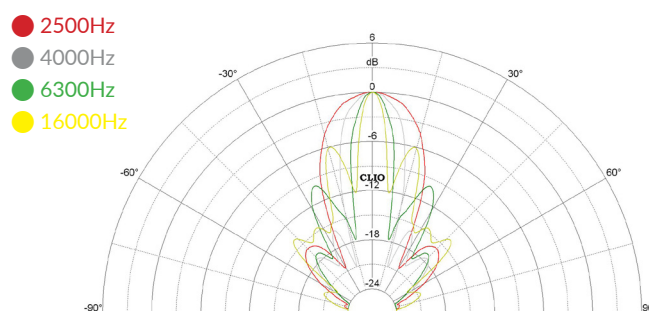
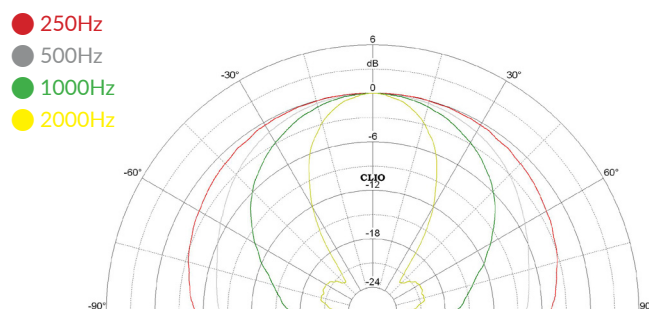
Rain Cover
Code: 39437

0.50 kg / 1.10 lb

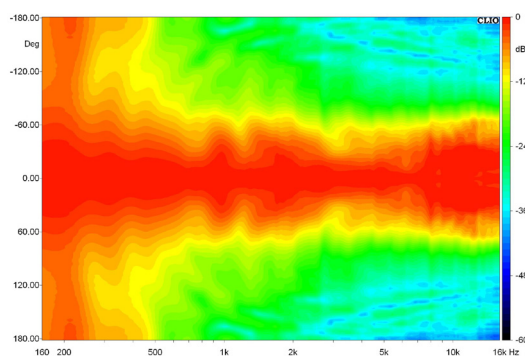
HORIZONTAL POLAR DIAGRAMS



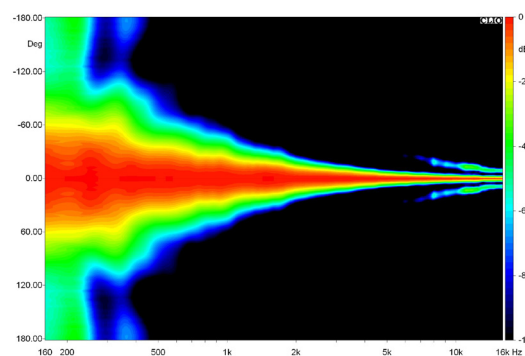
VERTICAL POLAR DIAGRAMS



HORIZONTAL BEAMWIDTHTH



VERTICAL BEAMWIDTHTH



FREQUENCY RESPONSE

