

Passive Point Source

MAIN APPLICATIONS

- House of Worship
- School & corporate audio visual sound reinforcement
- Background music, announcements
- Clubs
- Auditoriums
- Theatres

MAIN FEATURES

- 2-way coaxial
- 70/100V line transformer
- Recommended amplifier 120W RMS
- 5" low frequency woofer with 1.5" coil
- 1" high frequency driver with 1" coil
- Input connectors Euroblock IN & throu
- Gas injected polypropylene enclosure
- Speaker wall/ceiling mount stand (optional)
- Available in black and white color



DESCRIPTION

The FBT CANTO 5T series speakers feature lightweight, gas-injected polypropylene enclosures. Available in black or white finish, the FBT CANTO 5T provides fixed installations with an elegant design that blends into any decor. The FBT CANTO 5T is a two-way design incorporating a 5" coaxial low-frequency woofer with a 1.5" voice coil and a 1" high-frequency driver with a 1" voice coil, coupled to 90° dispersion. The internal crossover is at a fixed frequency of 3kHz; with a frequency range of 80Hz to 20kHz, the FBT CANTO 5T provides high fidelity sound for both speech and music applications with a maximum SPL of 117dB. The FBT CANTO 5T incorporates a switchable 70V/100V transformer with a power selector from 7.5W to 60W and low impedance connection (16 Ohm). The rear panel features a terminal block IN & through for bare wire connection. 4 anchor positions at the rear of the cabinet allow the use of a horizontally and vertically adjustable wall/ceiling stand.

TECHNICAL SPECIFICATIONS

GENERAL

Code	Black	45507
	White	45395
Configuration	way	2 coax
Low frequency woofer	inch	5 - 1.5 coil
High frequency driver	inch	1 - 1 coil
Transformer	V / W	100 / 7.5 - 15 - 30 - 60

ACOUSTIC SPECIFICATIONS

Frequency response (@-6dB)	Hz	80 - 20k
Sensitivity (@1W/1m)	dB	93
MAX SPL (cont/peak)	dB	114 / 117
Dispersion	H° x V°	90 conical
Crossover frequency	Hz	3k
Recommended HP filter	Hz - dB oct	70 - 24

INPUTS & OUTPUTS

Input connectors		4-pin Euroblock in & thru
------------------	--	---------------------------

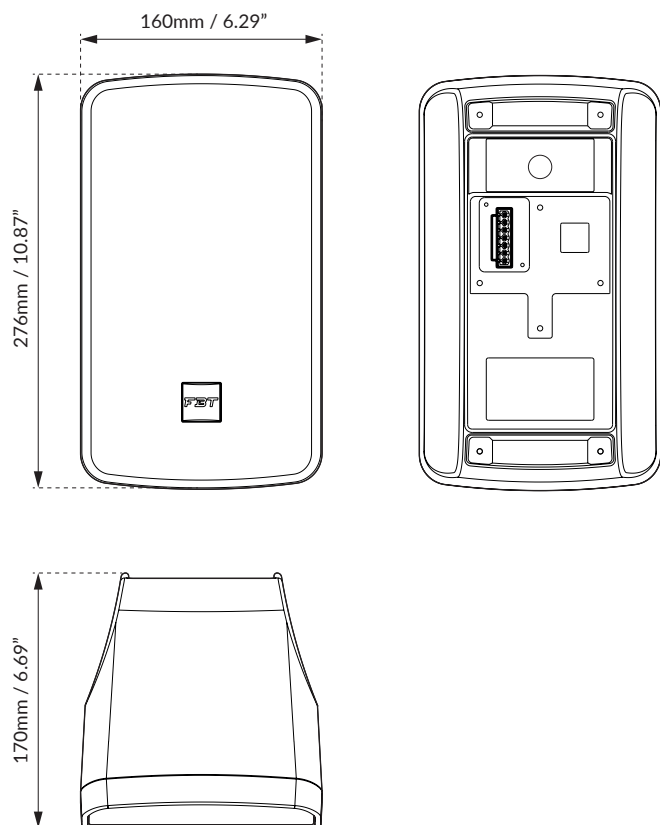
AMPLIFIER

Recommended amplifier	W RMS	120
Long term power	W	60
Short term power (IEC 268-5)	W	240
Nominal impedance	Ohm	16

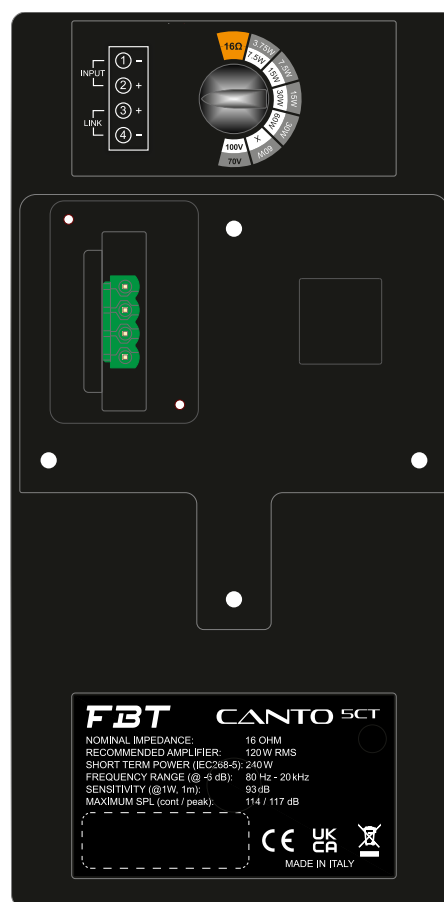
MECHANICAL SPECIFICATIONS

Material		Gas injected polypropylene
Net dimensions (WxHxD)	mm	160 x 276 x 170
	inch	6.29 x 10.87 x 6.69
Transport dimensions (WxHxD)	mm	225 x 360 x 215
	inch	8.86 x 14.17 x 8.46
Net weight	kg	3.60
	lb	7.93
Transport weight	kg	4.50
	lb	9.92

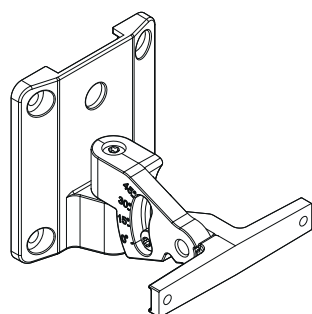
DIMENSIONAL DRAWING



CONTROL PANEL



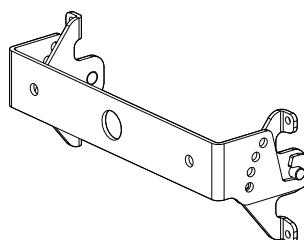
ACCESSORIES



WM-45

Wall Metal Bracket
 Black code: 44855
 White code: 44864

90 x 90 x 92mm
 3.54 x 3.54 x 3.62inch
 0.22 kg / 0.48 lb



CN-U 5

Wall Metal Bracket
 Black code: 47912
 White code: 47913

235 x 90 x 80mm
 9.25 x 3.54 x 3.14inch