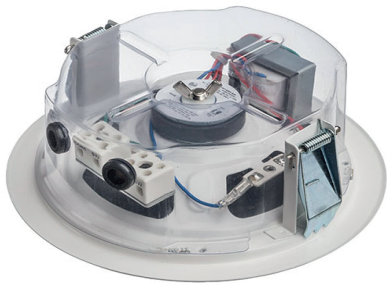


Ceiling speaker for Voice Alarm applications, certified EN 54-24

EN54-24



DESCRIPTION

The 6W powered speaker is equipped with a 130mm full-range loudspeaker and a 100V transformer with 3 power adjustments. The powder coated metal similar to RAL 9016 guarantees long-term stability. Thanks to an innovative air flow system, the CSP provides sound characteristics which are attributed to a conventional bass speaker. An extremely flat construction method allows a low mounting depth of only 70mm, with less than 1 kg product weight. For additional safety a 4 pin-ceramic block and a thermal fuse are provided and the speaker is impregnated against dampness. Protection class IP 21C secures the speaker against the impact of environmental influences. Quick and easy mounting with spring clamps and short tension distance. Perfectly suitable for installations where the installation depth is very limited. In combination with the fire dome FD506 the speaker is compliant with the British Standard BS 5839, Part 8. Special paint of the speaker in 4-digit RAL- or NCScolour available at extra cost. The innovative PET-plastic contact protection is included in the delivery. This speaker is suitable for a ceiling strength of about 3 – 45 mm. Our specification is primarily related to solid ceilings, for ceilings with soft materials a higher ceiling thicknesses could be necessary. In addition, stronger cables and other fittings may also result in changes of the appropriate setup. With regard to the variety of materials and manufacturers, we recommend to build in a sample of the speaker to match the requirements accurately.

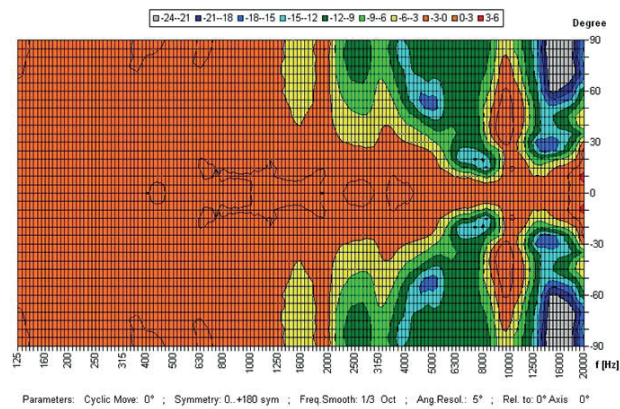
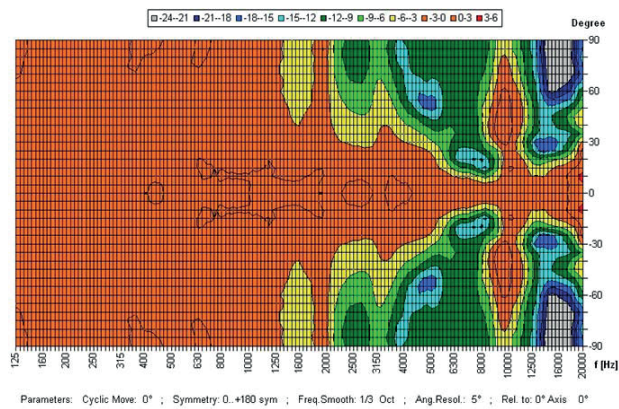
ELECTRICAL DATA

Transducers	130mm Full-range driver
Rated Noise Power	6W
Rated Impedance	100V LINE : 1667/3333/6667 Ohm LOUDSPEAKER DIRECT/BYPASS : 8 Ohm
Transformer Taps (100V)	6/3/1,5 W
Frequency response (-10dB)	57 - 24.000 Hz
EN54-24 Sensitivity (1W/4m)	74,8dB (with PET back can) 74,2dB (with FD506 option)
EN54-24 Max SPL (rated noise power/4m)	85dB
Dispersion -6dB, 500Hz	180°
Dispersion -6dB, 1KHz	180°
Dispersion -6dB, 2KHz	140°
Dispersion -6dB, 4KHz	85°

MECHANICAL DATA

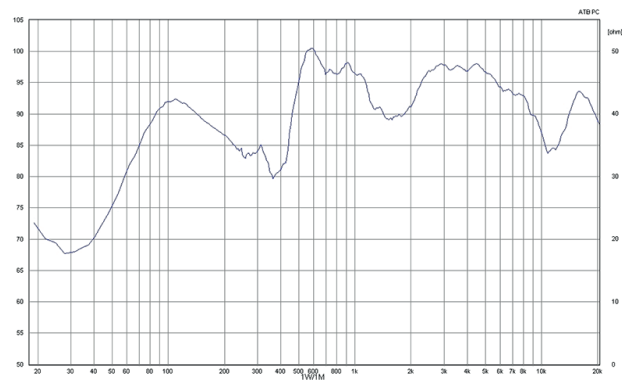
Dimensions	Ø181,5x66 mm (with PET back can) Ø181,5x91,5 mm (with FD506 option)
IP Rating	IP21C (Type)
Weight (net)	0,55 kg (with PET back can) 0,75 kg (with FD506 option)
Ceiling Cut-out	156 mm
Temperature range	-10 / + 55 °C
Mounting	spring clamp
Connector	4-pin ceramic block
Terminal diameter	3,2mm
Colour	RAL 9016
Optional Accessories	FD506 (metal fire dome)
Code	45890

POLAR DIAGRAMS

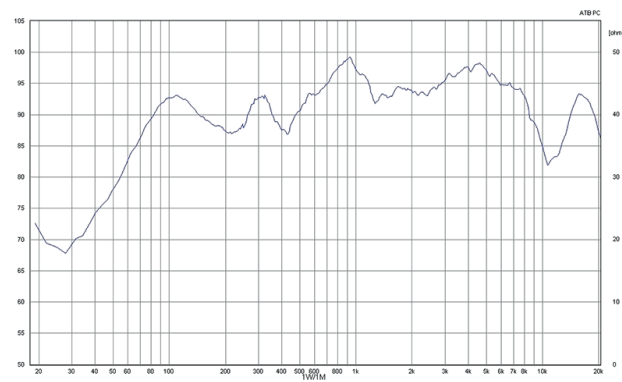


FREQUENCY RESPONSE DIAGRAM

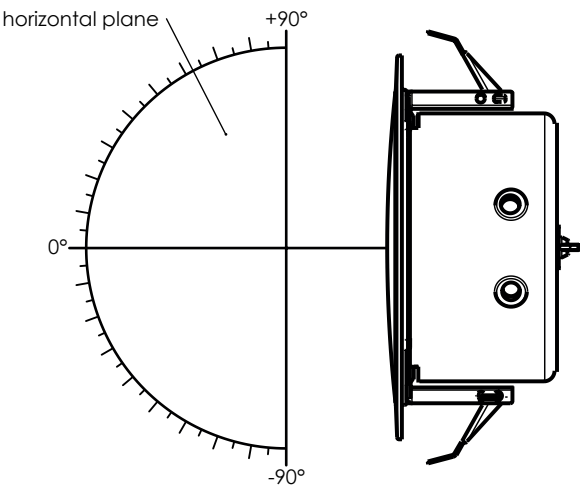
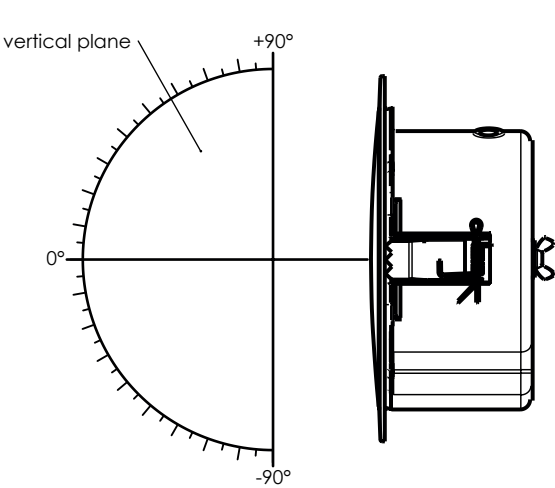
CSP 506 T/EN W/ FIRE DOME



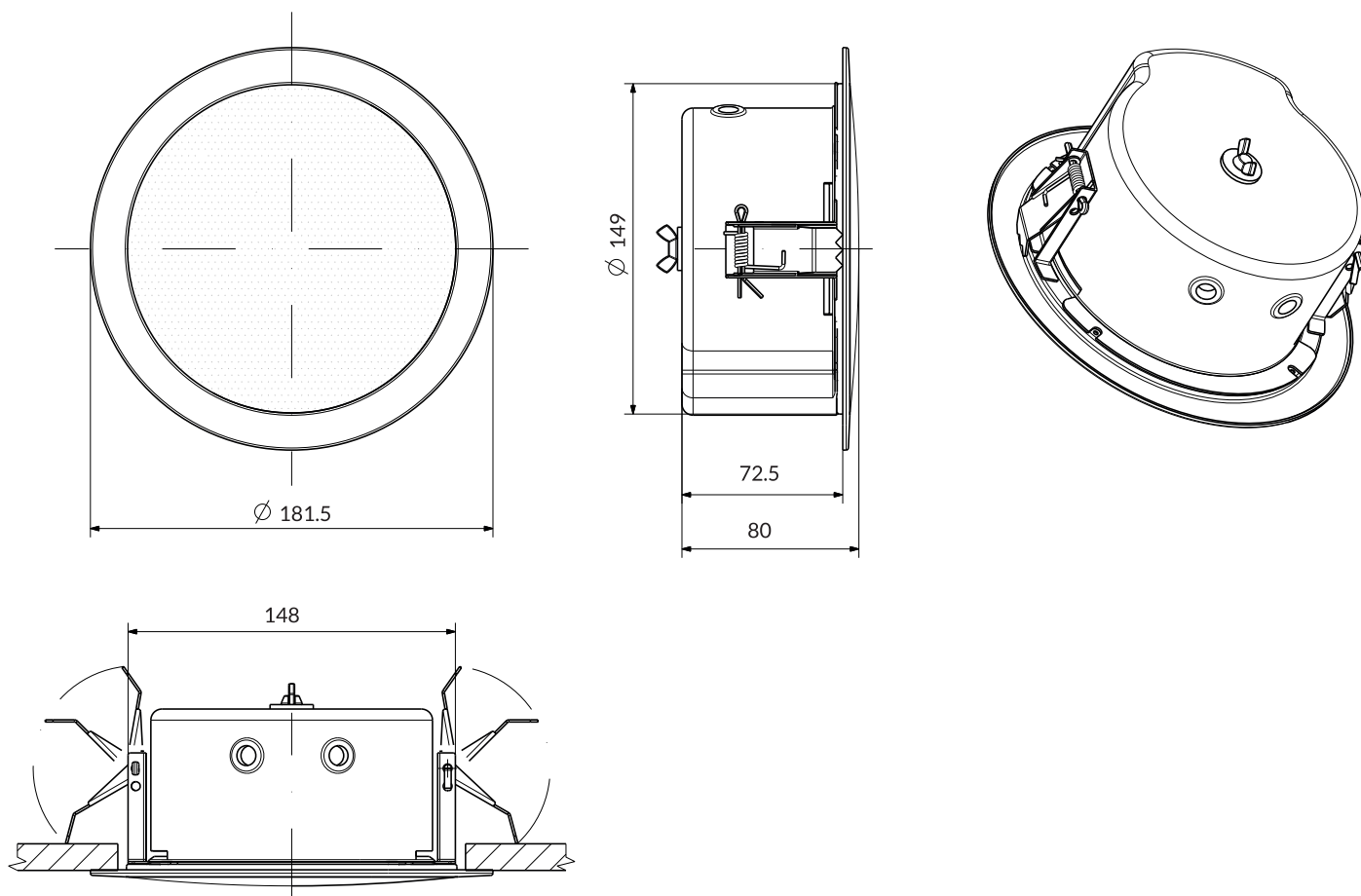
CSP 506 T/EN



MEASUREMENT REFERENCE AXIS



DIMENSION DRAWING



MOUNTING INSTRUCTIONS

1. Unscrew the nut in the middle of the contact protection
2. Remove the contact protection of the loudspeaker
3. Put the incoming cable through the cable entry of the contact protection.
4. Connect the incoming cable with the connecting clamp of the loudspeaker
5. Put the contact protection on the loudspeaker fix it with the nut.
6. Lift up the leg spring of the loudspeaker and put the loudspeaker into the ceiling cut-out.
7. Put the loudspeaker into the ceiling cut-out until the speaker is completely locked up with the ceiling.

Mounting instructions with firedome FD 506

1. Unscrew the nuts and remove the firedome.
2. Put the incoming cable through the cable entry of the firedome.
3. Connect the incoming cable with the connecting clamp of the loudspeaker.
4. Put the firedome on the loudspeaker fix it with the nuts.
5. Lift up the leg spring of the loudspeaker and put the loudspeaker into the ceiling cut-out.
6. Put the loudspeaker into the ceiling cut-out until the speaker is completely locked up with the ceiling.

NOTES

- About enclosure protection, the loudspeakers are tested and classified according to the IEC standard 60529, please note that the testing of the products has been carried out in laboratory conditions which are not always 100% comparable with the conditions of different installation environments. This protection can be reduced due to normal wear and tear depending on the installation environment.
- The IP rating specified is based on Manufacturer test results, not on CNBOP-PIB test results. Certification only verifies the minimum requirements for EN54-24 compliance.
- Data presented on this data sheet represents the basic performance specifications for the model. For a detailed analysis of this loudspeaker's performance, please download the GLL file from our website: www.fbt.it
- FBT strives to improve its products on a continual basis. Specifications are therefore subject to change without notice.
- The Specifications data was measured according to EN 54-24.